



Apartment (EPC Rating: C)

LAWN LANE, HEMEL HEMPSTEAD,  
HERTFORDSHIRE, HP3 9HS

PCM

£1,750 PCM

# 3 Bedroom Apartment located in Hertfordshire

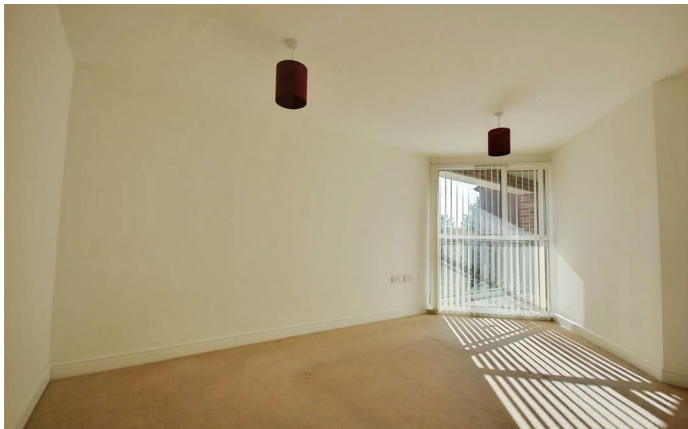
LOVELY THREE BEDROOM APARTMENT IN A GATED DEVELOPMENT OPPOSITE THE GRAND UNION CANAL - AVAILABLE JUNE 2026.

Step into stylish, modern living with this exceptional three double bedroom luxury apartment, set within an exclusive gated development designed for comfort, convenience, and contemporary flair.

From the moment you enter, you're greeted by a spacious hallway with built-in storage, leading into a beautifully presented home finished to a high standard throughout. The apartment boasts three generous double bedrooms, including a stunning principal suite complete with a sleek en-suite shower room. The second bedroom opens directly onto the balcony through patio doors—perfect for morning coffee with a view.

The heart of the home is complemented by a modern family bathroom, while the energy-efficient underfloor heating system ensures warmth and comfort all year round. A water softener adds an extra touch of everyday luxury.

Step outside onto your private balcony overlooking open fields and the picturesque Grand Union Canal—a rare and tranquil setting that feels a world away, yet you're less than a mile from Hemel Hempstead town centre and Apsley mainline station, offering excellent connectivity.

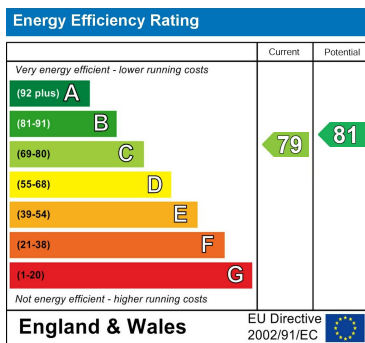


WATFORD LETTINGS | 12 MARKET STREET, WATFORD, HERTFORDSHIRE, WD18 0PD

Council Tax Band

C

Energy Performance Graph



Call us on

01923 220 012

[enquiries@warrenanthony.co.uk](mailto:enquiries@warrenanthony.co.uk)

[www.warrenanthony.co.uk](http://www.warrenanthony.co.uk)

Agents Note: Whilst every care has been taken to prepare these particulars, they are for guidance purposes only. All measurements are approximate and are for general guidance purposes only and whilst every care has been taken to ensure their accuracy, they should not be relied upon and potential buyers are advised to recheck the

