



Maida Vale, W9

£480,000

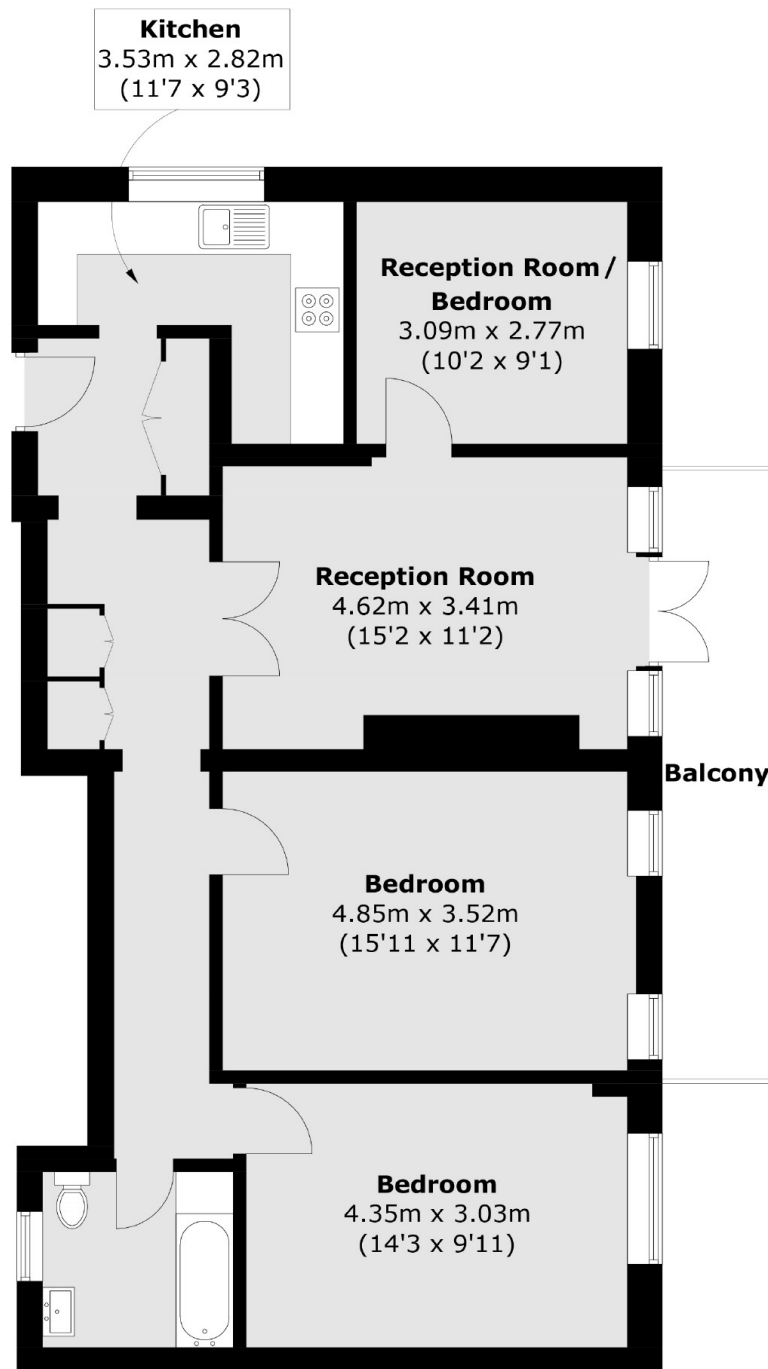
A second floor flat set in a modern purpose-built block. This property comes complete with two double bedrooms, separate kitchen, reception with access to the balcony and dining room and access to a lift and porter.

Wellesley Court is on the cusp of Maida Vale and St. John's Wood and less than 600 ft from multiple transport links and local amenities, providing fantastic access to the surrounding areas and into central London.

Features

- Chain Free
- Additional Reception/Bedroom
- Separate Kitchen
- Porter & Lift
- Private Balcony
- Great Transport Links

Maida Vale, Maida Vale, W9



Total area (approx.): 84.1 sq. m (905.2 sq. ft)
Balcony: 8.8 sq. m (94.7 sq. ft)