



Price
£850,000

Freehold

5x  4x  3x 

Clayhall Avenue,
Clayhall, Ilford, Essex,
IG5

 **DOUGLAS
ALLEN**
Helping you move forwards

Accommodation

GROUND FLOOR

Porch

Hallway

Lounge: 29'4 into bay x 12'8 (8.95m x 3.86m)

Family Room: 14'4 x 6'8 (4.37m x 2.03m)

Kitchen/Diner: 27'5 x 16'3 (8.36m x 4.96m)

Utility Room: 9'1 x 6'3 (2.77m x 1.91m)

Shower Room

FIRST FLOOR

Landing

Bedroom 2: 14'6 x 13'6 into fitted wardrobes (4.42m x 4.12m)

En-Suite Shower Room

Bedroom 3: 15'5 x 11'6 into fitted wardrobes (4.70m x 3.51m)

Bedroom 4: 15'7 into bay x 11'7 (4.75m x 3.53m)

Bedroom 5: 11'9 x 6'6 (3.58m x 1.98m)

Family Bathroom

SECOND FLOOR

Landing

Bedroom 1: 19'0 x 14'6 (5.80m x 4.42m)

En-Suite Shower Room

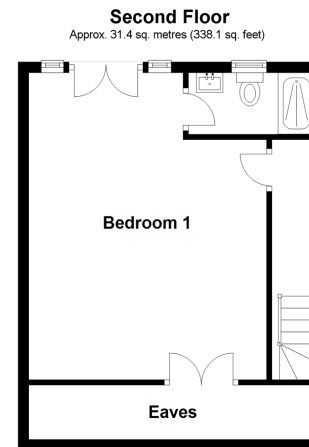
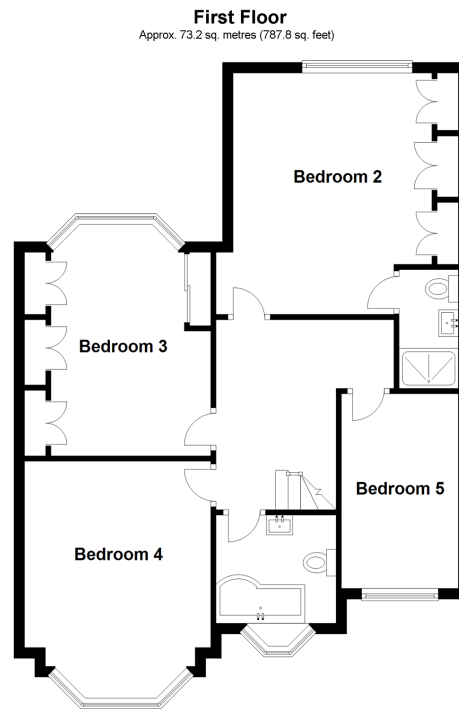
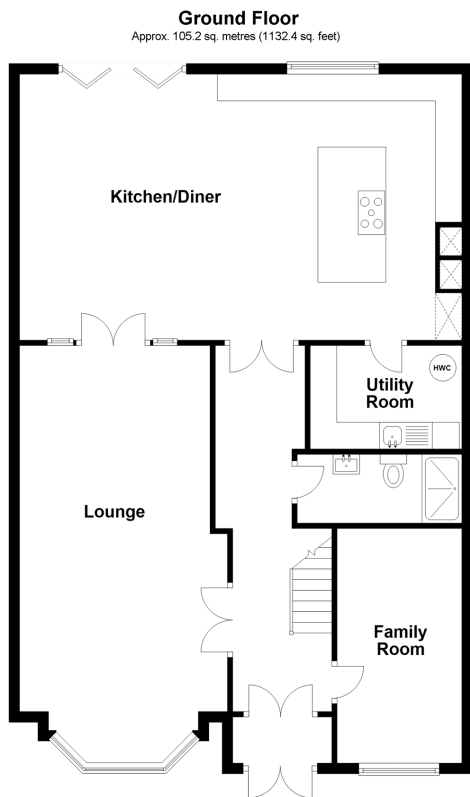
Eaves

OUTSIDE

Off Road Parking

Rear Garden

Outbuilding: 19'6 x 19'5 (5.95m x 5.92m)





Main features

- Semi-detached family home with underfloor heating to the ground floor
- Immaculate condition throughout
- Utility room & downstairs shower room
- Extended to side, rear and into the loft with an outbuilding to the rear
- Off street parking for approximately 2 vehicles
- Beal High School catchment area
- Approximately a mile to 2 central line stations



Nearest Schools

Primary Schools: Glade Primary 0.2 miles, Parkhill Junior School 0.5 miles, Redbridge Primary 0.7 miles

Secondary Schools: Beal High School 0.3 miles, Caterham High School 0.4 miles, Woodbridge High School 1.0 miles



Transport Information

Underground South Woodford 1.0 miles, Redbridge 1.0 miles, Gants Hill 1.1 miles



Address

Clayhall Avenue, Clayhall, Ilford, Essex, IG5



Directions

For directions to this property please contact us.

