



## Fleetwood Road, NW10

£1,038 Per calendar month

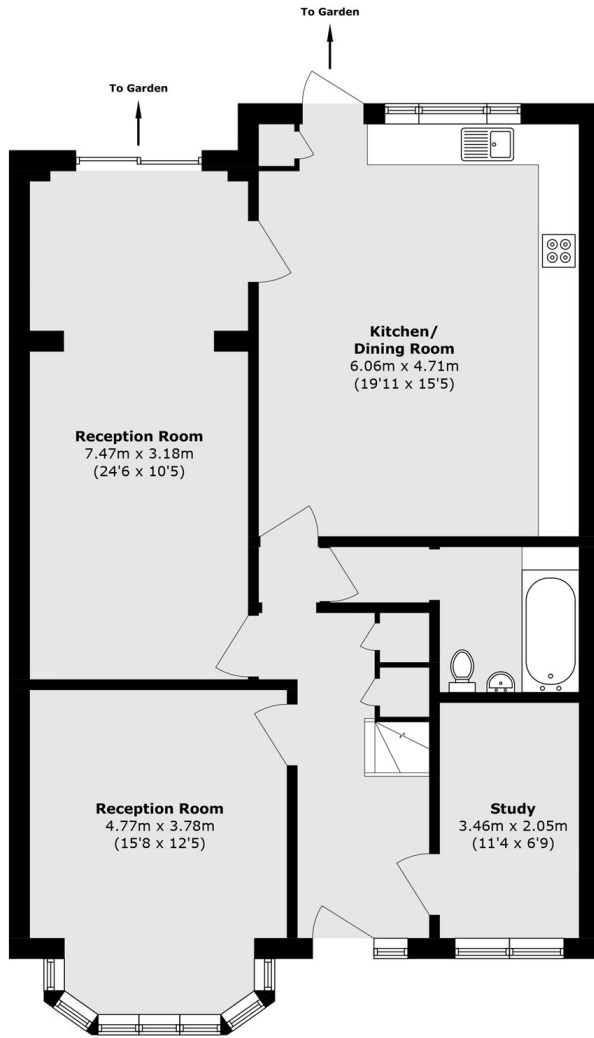
This five bedroom two bathroom semi detached family home, spread over two floors offers a spacious and entertaining living space with an integrated kitchen, private rear garden and off street parking.

Fleetwood Road is located within walking distance to Dollis Hill Underground Station & Willesden Green Underground Station (Jubilee Line) and within easy reach of local amenities and Gladstone Park.

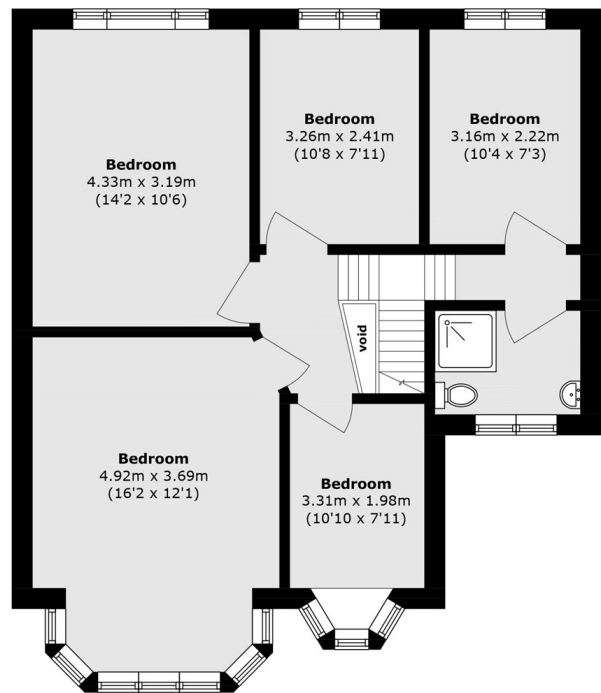
### Features

- Five Bedrooms
- Two Bathrooms
- Two Reception Rooms
- Semi Detached House
- Garden
- Off Street Parking

# Fleetwood Road, London, NW10



**Ground Floor**



**First Floor**

Total area (approx.): 160.5 sq. m (1727.6 sq. ft)  
(Excluding Void)