



## Paddington Street, W1U

£1,200,000

A two double bedroom, two bathroom lateral apartment located on the second floor of a period building just off Marylebone High Street.

Perfectly located for the restaurants and amenities of Marylebone. Local stations are Baker Street and Regents Park.

### Features

Reception - Dining Room  
Central Marylebone Location  
Main Bedroom En-Suite  
Second Double Bedroom  
Bathroom  
Lease 999 years from 1997

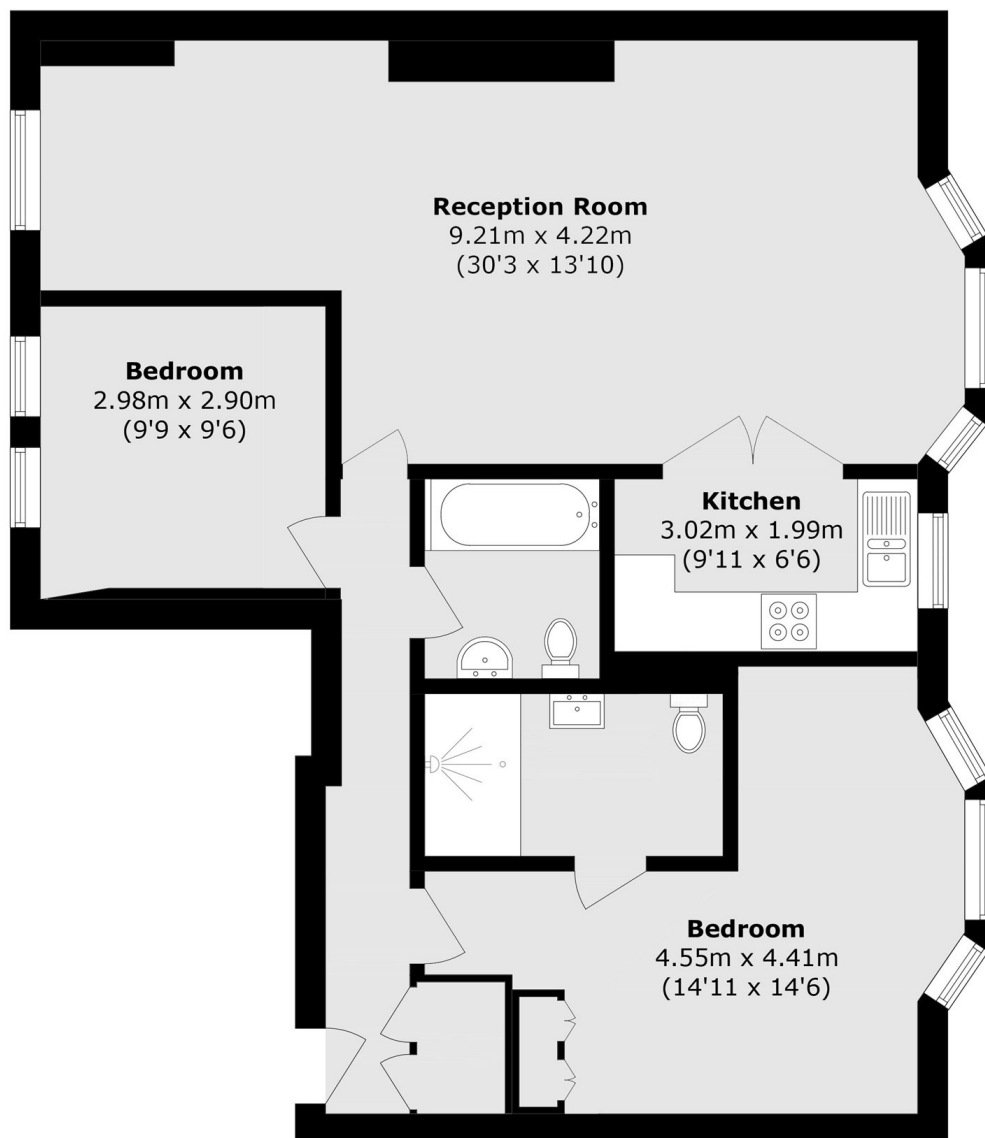


## Paddington Street, W1U

The property has a dual aspect reception room with a dining area which provide superb living and entertaining space, doors open to the separate kitchen with modern appliances. The main bedroom has an en-suite shower room. Additionally there is a second double bedroom and a bathroom.



# Paddington Street, London, W1U



## Second Floor

Total area (approx.): 80.6 sq. m (867.5 sq. ft)