



Onslow Gardens, SW7

£1,096 Per week

A beautifully presented three bedroom top floor apartment (with lift), featuring a private roof terrace with far-reaching views and access to attractive communal gardens.

Onslow Gardens is regarded as one of the most desirable addresses in South Kensington. The apartment is situated within an equal walking distance of both South Kensington and Gloucester Road underground stations, providing excellent access to local amenities.

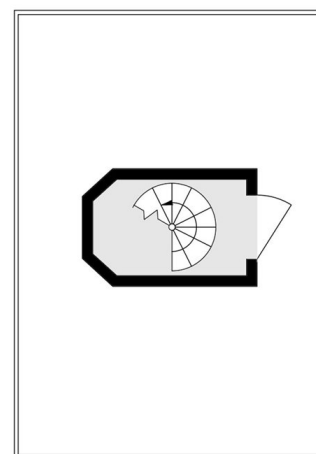
Features

- Three Bedroom
- Two Bathrooms
- Lift Access
- Private Roof Terrace
- Access To Communal Gardens
- Wood Floors

Onslow Gardens, London, SW7



Fourth Floor



Roof Terrace

Total area (approx.): 99.8 sq. m (1074.2 sq. ft)
Balcony area (approx.): 26.3 sq. m (283.1 sq. ft)