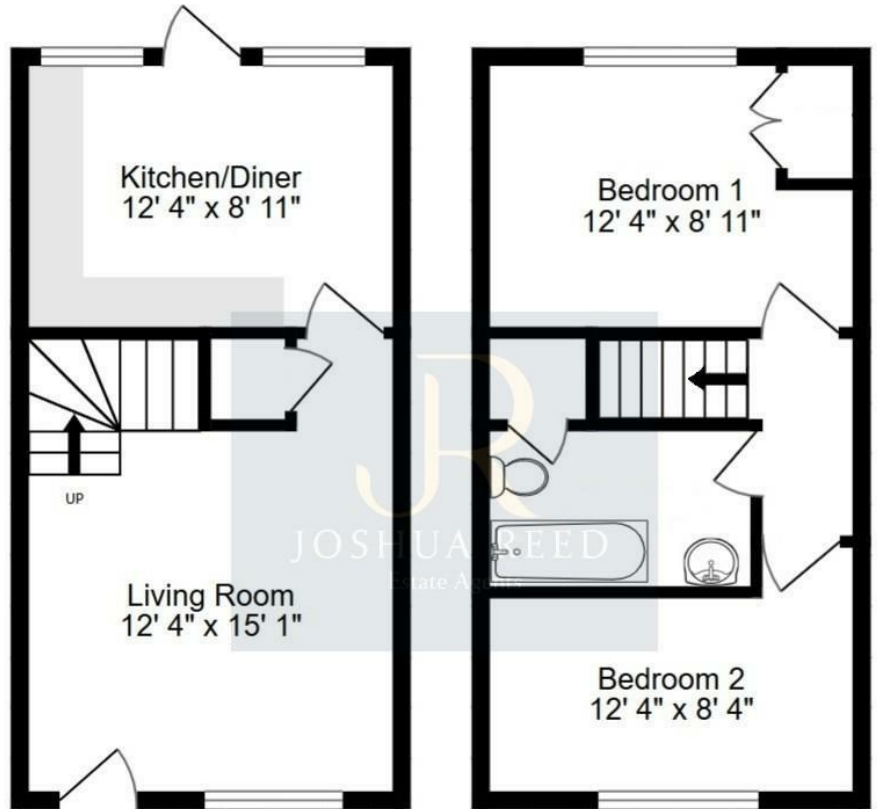




2 Bed House - Terraced
located in

JR
JOSHUA REED
Estate Agents

20 Mill Close
Buntingford
SG9 9SZ



TOTAL FLOOR AREA : 605 sq.ft. (56.2 sq.m.) approx.

Whilst every attempt has been made to ensure the accuracy of the floorplan contained here, measurements of doors, windows, rooms and any other items are approximate and no responsibility is taken for any error, omission or mis-statement. This plan is for illustrative purposes only and should be used as such by any prospective purchaser. The services, systems and appliances shown have not been tested and no guarantee as to their operability or efficiency can be given.

£365,000

CONTACT

23-27 Maidenhead Street
Hertford
Hertfordshire
SG14 1DW

EMAIL

josh@joshua-reed.co.uk

TELEPHONE

01992 917388

www.joshua-reed.co.uk

SUMMARY

A well presented two bedroom home nicely positioned in this peaceful location walking distance to Buntingford High Street that offers an array of amenities. The accommodation features a nice size living room, kitchen/diner, two double bedrooms with fitted wardrobes to the master and a luxury re-fitted bathroom.

Externally, the property has great curb appeal with a nice size rear garden combining patio area, lawn and rear access, allocated residents parking with plenty of additional parking nearby.

Contact Joshua Reed Estate Agents to arrange a viewing.

DIRECTIONS

