

# ANTHONY JAMES MANSEY

Residential Sales & Lettings



## Kneller Gardens

Isleworth, TW7 7NP

**£765,000**

Freehold

Council Tax Band D

Anthony James Manser are most pleased to present this large and substantial semi detached property to the market. Totalling approximately 140 SQ M 1500 SQ FT this home has been extended to form accommodation over three floors and comprises on the ground floor of entrance hallway, two reception rooms, extended kitchen with roof line windows and bathroom. The first floor affords three bedrooms and family bathroom. The top floor boasts a large principal bedroom with en suite. There is off street parking to the front of the property and a large lawned rear garden. Whitton High Street provides an excellent range of shops including Sainsburys and Tesco's. This home is being sold chain free and is immediately available to view via the owners sole agents.

- A Substantial Semi Detached House
- In an Excellent Location Close to Whitton High Street
- Extended to Form a Large and Spacious Family Home
- Impressive Footprint of Approximately 140 SQ M 1500 SQ FT
- Two Reception Rooms, Extended Kitchen and Bathroom
- Three First Floor Bedrooms and Family Bathroom
- Converted Loft to Form Principal Bedroom with En Suite
- Lawned Rectangular Garden
- Chain Free - Move in Immediately
- Off Street Parking

### Viewing

Please contact our Sales Office on 020 8847 0488 if you wish to arrange a viewing appointment for this property or require further information.



4



3



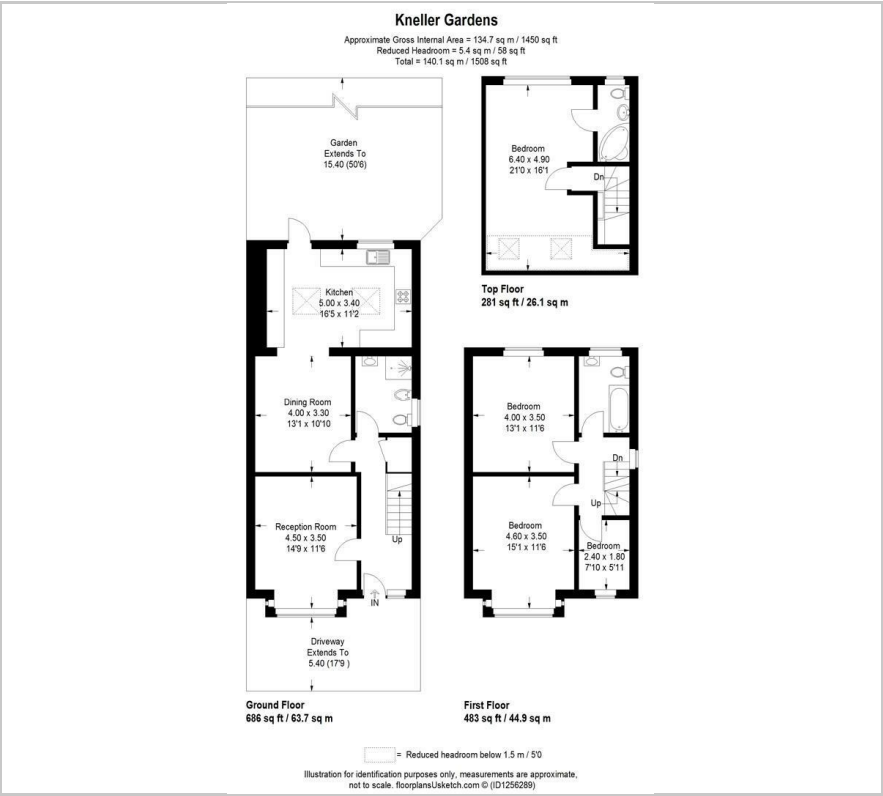
2



C



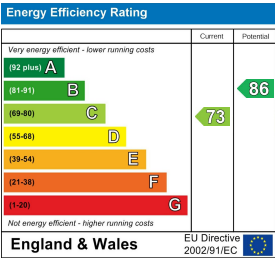
Floor Plan



Area Map



Energy Efficiency Graph



These particulars, whilst believed to be accurate are set out as a general outline only for guidance and do not constitute any part of an offer or contract. Intending purchasers should not rely on them as statements of representation of fact, but must satisfy themselves by inspection or otherwise as to their accuracy. No person in this firms employment has the authority to make or give any representation or warranty in respect of the property.