



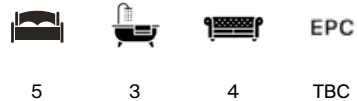
QUEENS ROAD

Wimbledon, SW19



QUEENS ROAD

An elegant double fronted family home with a large south facing rear garden and off-street parking for sale in in the popular South Park Gardens area.



Local Authority: London Borough of Merton

Council Tax band: G

Tenure: Freehold

Guide Price: £3,000,000



ABOUT THE PROPERTY

This impressive double fronted Victorian family home has been recently refurbished to an exceptionally high standard, combining classic period charm with outstanding contemporary living. Offering expansive entertaining space, five generous double bedrooms, a rare basement with excellent ceiling height, and a large south facing rear garden, the property is arranged over multiple floors and finished beautifully throughout.

Set back behind a deep front garden providing off street parking for two cars, the ground floor unfolds with a welcoming drawing room and an elegant double reception room, both retaining attractive period features and fireplaces.

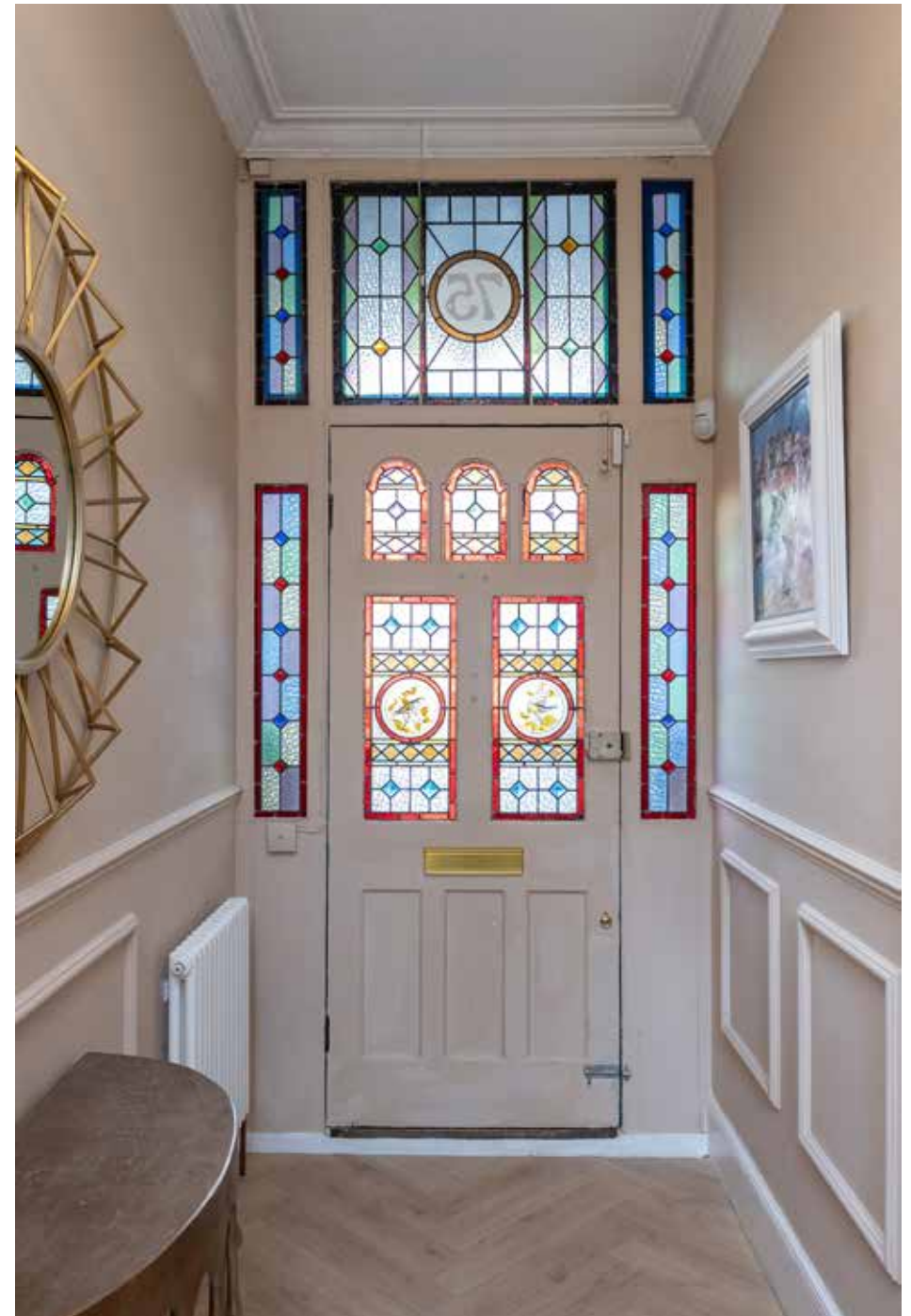






To the rear, a stunning full width extension creates a superb open plan family and entertaining space, centred around a bespoke modern kitchen. Full width French doors flood the space with natural light and open directly onto the landscaped south facing garden, offering privacy and a peaceful outlook. A utility room/storeroom and a guest WC complete this level.

The lower ground floor features a highly unusual basement for the area, boasting fantastic ceiling height and offering excellent flexibility as a media room, gym, home office or additional storage.







The first floor hosts the spacious principal bedroom to the rear of the house, featuring extensive fitted wardrobes and a beautifully appointed en suite bathroom.

Two further large double bedrooms and a stylish family bathroom complete this floor. The top floor provides two additional well proportioned bedrooms served by a generous family bathroom, ideal for growing families or guests.

A rare opportunity to acquire a substantial, turnkey Victorian home with exceptional volume, outdoor space, and modern enhancements, in a desirable residential setting.



Please note, some imagery is CGI.





PROPERTY LOCATION

Wimbledon is the only London station offering interchange between National Rail, Underground and Tramlink services, with fast connections to central London—Waterloo is around 19 minutes away. The District Line and Thameslink provide links to Blackfriars and St Paneras International, while the A3 and M25 offer easy access to Heathrow and Gatwick. South Wimbledon station (approx. 0.5 miles) also provides Northern Line services. The area is known for excellent schooling, including Holy Trinity CofE Primary, Wimbledon High School and King’s College School, attracting families from across London. It offers a village-style lifestyle with access to Wimbledon Village, the High Street and green spaces such as Wimbledon Common and Wimbledon Park. The mix of period homes, boutique shops, cafés and restaurants adds to its appeal. Famous for hosting the world’s oldest tennis championship since 1877, Wimbledon also provides a wide range of leisure facilities including golf courses, riding stables, tennis courts and sports clubs.







Approximate Gross Internal Area (Excluding Reduced Headroom / Eaves Storage) = 236.6 sq m / 2547 sq ft / Basement = 52.7 sq m / 567 sq ft / Reduced Headroom / Eaves Storage = 15.9 sq m / 171 sq ft
 Total = 305.2 sq m / 3285 sq ft

This plan is for layout guidance only. Not drawn to scale unless stated. Windows and door openings are approximate. Whilst every care is taken in the preparation of this plan, please check all dimensions, shapes and compass bearings before making any decisions reliant upon them. (ID767266)

Ross Jordan

+44 20 3830 8634

ross.jordan@knightfrank.com

Knight Frank Wimbledon

58 High Street, London

SW19 5EE

knightfrank.co.uk

Your partners in property

1. Particulars: These particulars are not an offer or contract, nor part of one. You should not rely on statements given by Knight Frank in the particulars, by word of mouth or in writing ("information") as being factually accurate about the property, its condition or its value. Neither Knight Frank nor any joint agent has any authority to make any representations about the property, and accordingly any information given is entirely without responsibility on the part of Knight Frank. 2. Material Information: Please note that the material information is provided to Knight Frank by third parties and is provided here as a guide only. While Knight Frank has taken steps to verify this information, we advise you to confirm the details of any such material information prior to any offer being submitted. If we are informed of changes to this information by the seller or another third party, we will use reasonable endeavours to update this as soon as practical. 3. Photos, Videos etc: The photographs, property videos and virtual viewings etc. show only certain parts of the property as they appeared at the time they were taken. Areas, measurements and distances given are approximate only. 4. Regulations etc: Any reference to alterations to, or use of, any part of the property does not mean that any necessary planning, building regulations or other consent has been obtained. A buyer must find out by inspection or in other ways that these matters have been properly dealt with and that all information is correct. 5. Fixtures and fittings: A list of the fitted carpets, curtains, light fittings and other items fixed to the property which are included in the sale (or may be available by separate negotiation) will be provided by the Seller's Solicitors. 6. VAT: The VAT position relating to the property may change without notice. 7. To find out how we process Personal Data, please refer to our Group Privacy Statement and other notices at <https://www.knightfrank.com/legals/privacy-statement>.

Particulars dated May 2026. Photographs and videos dated May 2026. All information is correct at the time of going to print. Knight Frank is the trading name of Knight Frank LLP. Knight Frank LLP is a limited liability partnership registered in England and Wales with registered number OC305934. Our registered office is at 55 Baker Street, London W1U 8AN. We use the term 'partner' to refer to a member of Knight Frank LLP, or an employee or consultant. A list of members names of Knight Frank LLP may be inspected at our registered office. If you do not want us to contact you further about our services then please contact us by either calling 020 3544 0692, email to marketing.help@knightfrank.com or post to our UK Residential Marketing Manager at our registered office (above) providing your name and address.

