



📍 18 Chandlers Close, All Cannings, Wiltshire, SN10 3PH

🏠 Guide Price £399,950

An ideal family home offering four bedrooms, superb reception space, and a private garden, all perfectly positioned with a highly rated primary school just moments from the doorstep.

- All Cannings- a beautiful sought after village in the Pewsey Vale
- Fabulous open views to the side
- 4 bedrooms
- 3 reception rooms
- Stylish refitted kitchen
- Contemporary family bathroom & en suite shower room
- Utility & downstairs cloakroom
- Driveway parking for 2 cars
- Private enclosed rear garden

🏡 Freehold

🏠 EPC Rating D



A beautifully presented extended four-bedroom semi-detached village home, offering well proportioned accommodation (1331sqft) and impressive reception space, all complemented by stunning open aspect views to the side across rolling countryside towards the Alton Barnes White Horse and the North Wessex Downs.

The current owners have done a superb job extending and transforming the property into a deceptively spacious family home.

Internally, a welcoming entrance hallway with tiled flooring leads through a glass-panelled door into a smartly refitted kitchen, complete with wood effect worktops, a built-in oven, four-ring electric ceramic hob and extractor. The kitchen flows seamlessly into an impressive 14ft dining room, featuring useful understairs storage and sliding doors opening onto a decked sun terrace — perfect for indoor-outdoor living and entertaining. From the dining room, further doors lead to a flexible study/family room and a bright dual-aspect sitting room. A practical utility room and downstairs cloakroom complete the ground floor — essential for modern family living. To the first floor, there are four bedrooms (three generous doubles and a comfortable single) alongside a contemporary family bathroom. The second biggest bedroom benefits from fitted wardrobes, with the main bedroom also enjoying a stylish en suite shower room.

Externally, the property continues to impress. To the front, there is driveway parking for two vehicles along with an EV charging point. The fully enclosed rear garden offers a high degree of privacy, featuring a decked sun terrace leading onto a level lawn, with a shed and gated side access.

Situation

The property is beautifully situated in the village of All Cannings; a picturesque village set in the heart of the highly sought after Pewsey Vale which is an Area of Outstanding Natural Beauty (AONB) and part of the North Wessex Downs National Landscape. Wonderful countryside walks and cycle rides are on the doorstep. Village amenities include a wonderful primary school, an outstanding rated pre school, a community shop, a church and a thriving public house called The Kings Arms. The historic market towns of Marlborough and Devizes are located nearby. Between them, Marlborough and Devizes have much to offer with a wide range of facilities including shops, supermarkets, leisure centres, schools for all ages, a theatre, cinema and a museum. There is a nearby mainline rail service at Pewsey (approx. 7 miles) to London Paddington.

Property Information

Services: Night storage and electric room heaters, mains water, drainage and electricity are all connected.

In an AONB (Area of Outstanding Natural Beauty) and North Wessex Downs National Landscape

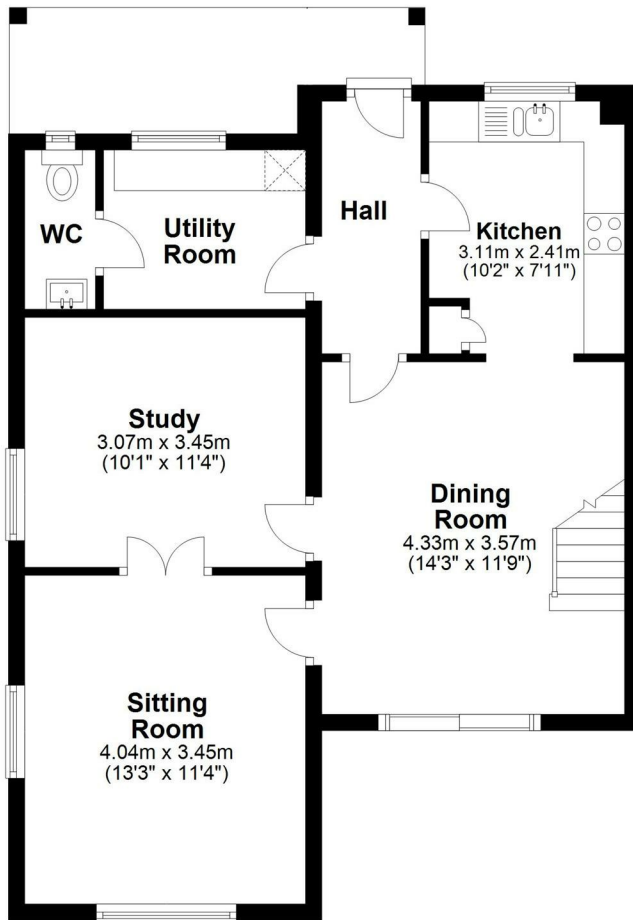
EV Charger fitted.

Council Tax: Band C



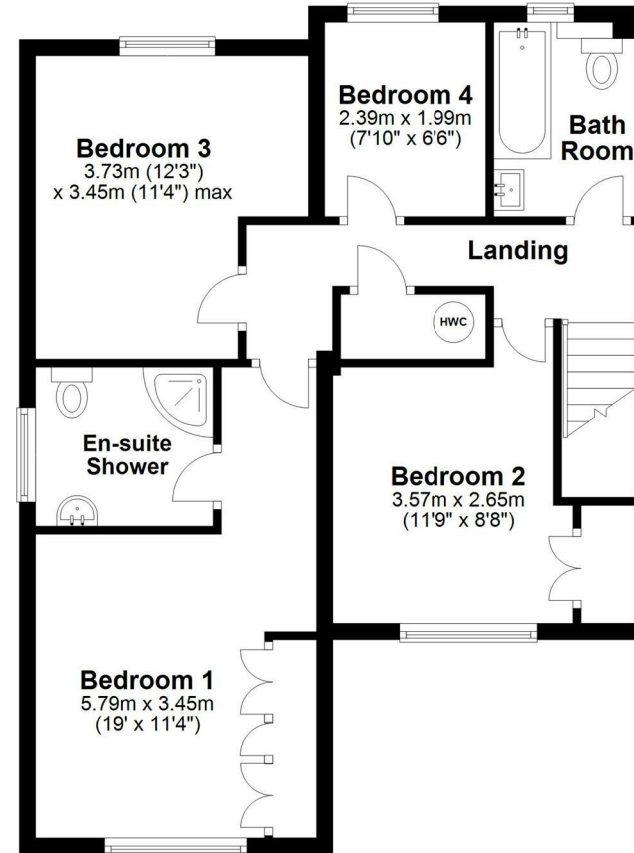
Ground Floor

Approx. 61.5 sq. metres (662.3 sq. feet)



First Floor

Approx. 62.2 sq. metres (669.2 sq. feet)



Total area: approx. 123.7 sq. metres (1331.5 sq. feet)

Disclaimer These particulars, whilst believed to be accurate are set out as a general outline only for guidance and do not constitute any part of an offer or contract. Intending purchasers should not rely on them as statements of representation of fact, but must satisfy themselves by inspection or otherwise as to their accuracy. No person in this firm's employment has the authority to make or give any representation or warranty in respect of the property. All measurements and distances are approximate only. Your home is at risk if you do not keep up repayments on a mortgage or other loan secured on it.