



## Crossharbour Plaza, E14

£520,000

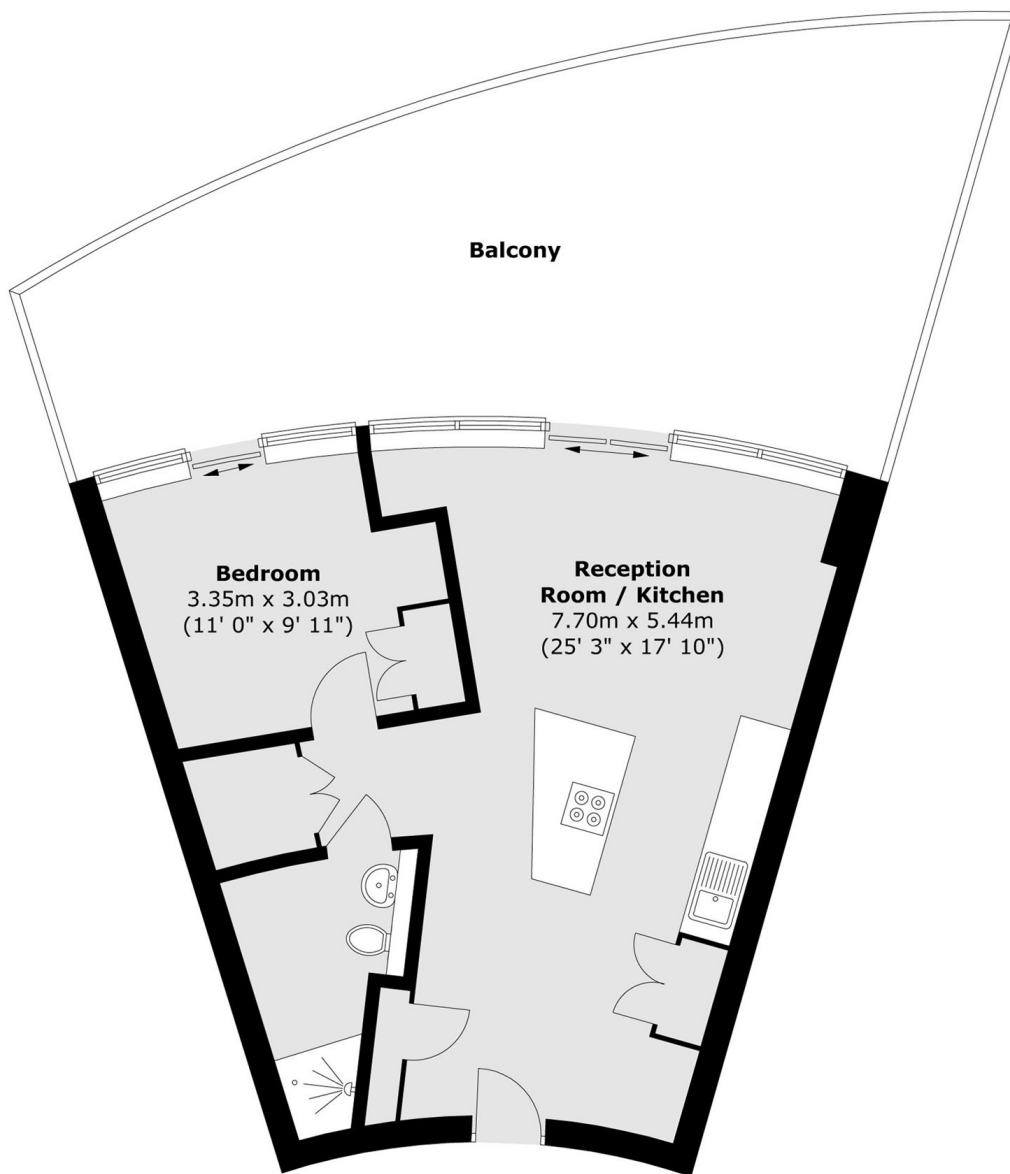
Located on the thirty seventh floor of the sought after Arena Tower, this one bedroom apartment is within walking distance of Canary Wharf. The property features a large terrace, open plan reception room, access to residents' leisure facilities, concierge service and is offered to the market chain free.

Arena Tower is within walking distance of Canary Wharf, offering excellent transport links to the City via the Elizabeth line and DLR. Residents benefit from access to extensive leisure facilities, including a 25 metre swimming pool, fully equipped cardio suite, sauna and spa pool. The development also features a split level brasserie, bar and restaurant, along with a private residents' lounge and cinema room.

### Features

- 552 Square Feet
- Large Terrace
- 37th Floor
- Residents Leisure Facilities
- Concierge Service
- Dock and Canary Wharf Views

# Crossharbour Plaza, London, E14



Total area (approx.) : 51.3 sq. m (552 sq. ft)  
Total balcony area (approx.) : 31.6 sq. m (340 sq. ft)