



Cobbett Road, TW2

£2,250 Per calendar month

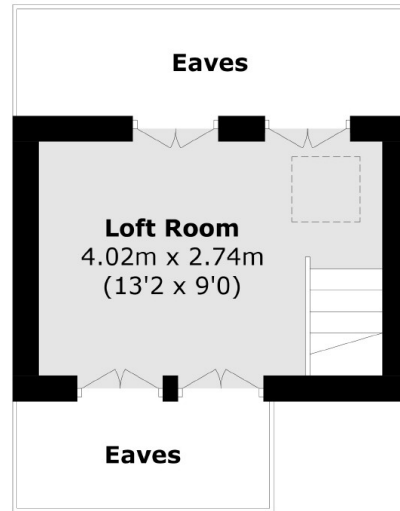
This well presented two/three bedroom semi-detached house is located on a popular road and has a large living room, a kitchen/diner and driveway parking for two cars.

Cobbett Road is situated close to Whitton high street which offers a vast array of local shops as well as a fantastic mainline station with its fast trains to London Waterloo.

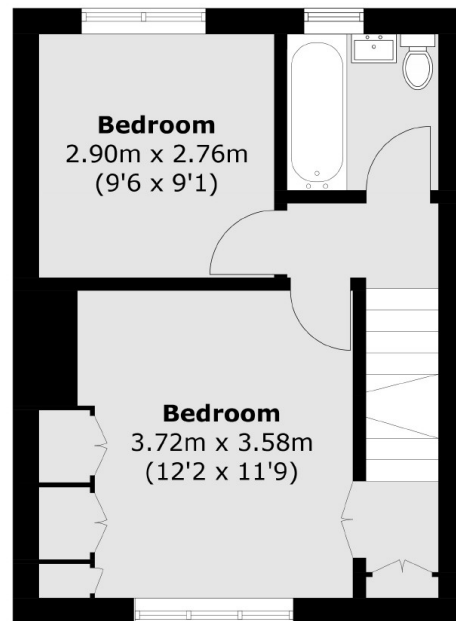
Features

- Semi-Detached House
- Two Double Bedrooms
- Spacious Lounge
- Kitchen
- Driveway For Two Cars
- Popular Location

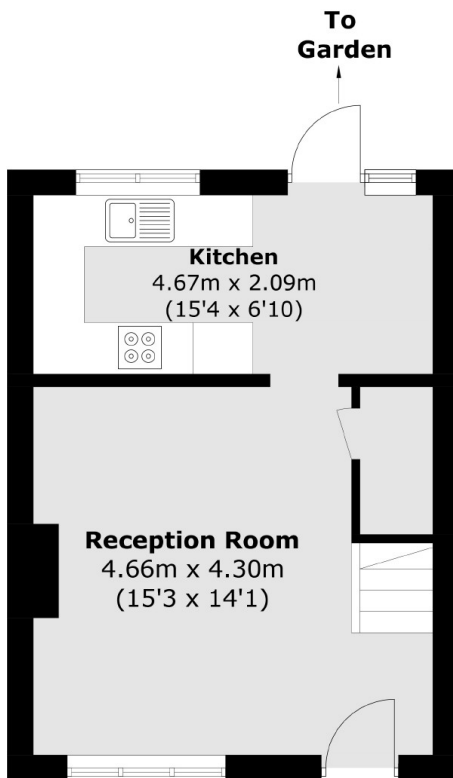
Cobbett Road, Twickenham, TW2



Second Floor



First Floor



Ground Floor

Total area (approx.): 73.2 sq. m (787.9 sq. ft)
(Excluding Eaves)

Dexters

Twickenham
84 Heath Road
Twickenham
TW1 4BW
Lettings
020 8744 2233

Energy Rating: E. We aim to make our particulars both accurate and reliable. However they are not guaranteed; nor do they form part of an offer or contract. If you require clarification on any points then please contact us, especially if you're traveling some distance to view. Please note that appliances and heating systems have not been tested and therefore no warranties can be given as to their good working order.

 **RICS** | Regulated
Estate Agent
and Letting Agent

dexters.co.uk