



## Redlees Close, TW7

£679,950

This substantial three bedroom semi-detached family home offers versatile living accommodation, together with exciting potential to extend on all levels (STPP), making it an ideal long term home that can adapt to your families needs.

Redlees Close is located in the heart of Old Isleworth, providing access to excellent schools, St Margarets village and train station. There is also access to the River Thames and Richmond Lock leading to Old Deer Park.

### Features

- Semi-Detached House
- Three Bedrooms
- Two Bathrooms
- Large Private Garden
- Off-Street Parking
- Potential To Extend (STTP)



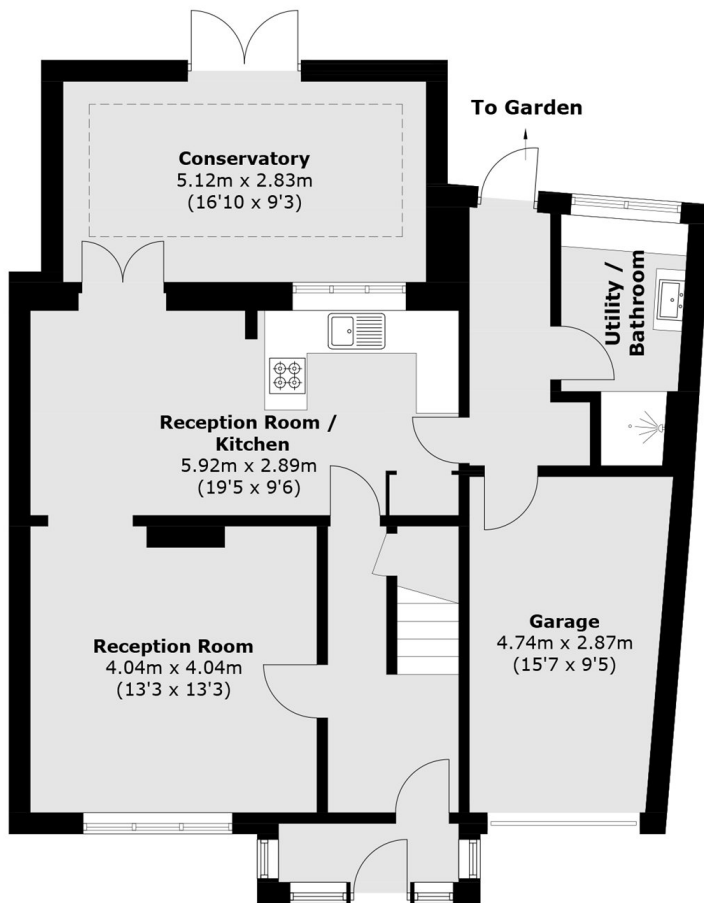
## Redlees Close, TW7

The ground floor features a bright and well proportioned front reception room, leading through to a spacious eat in kitchen and dining area. A large conservatory at the rear provides an additional reception space overlooking the garden. On this floor, you will also find a convenient utility and shower room as well as access to the garage. The impressive sunny garden is perfect for entertaining and the existing outbuilding provides superb potential for conversion into a home office, gym or a self contained annex.

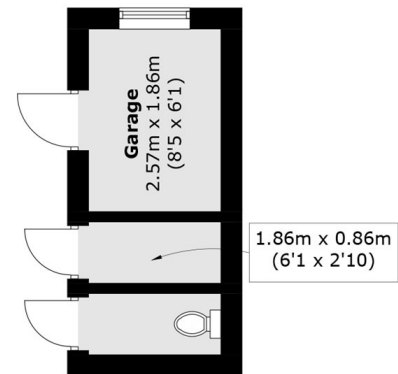
Upstairs, there are three bedrooms and a spacious family bathroom. There is also excellent scope for a loft conversion (STPP) offering the opportunity to add further bedrooms as well as off street parking on the private driveway.



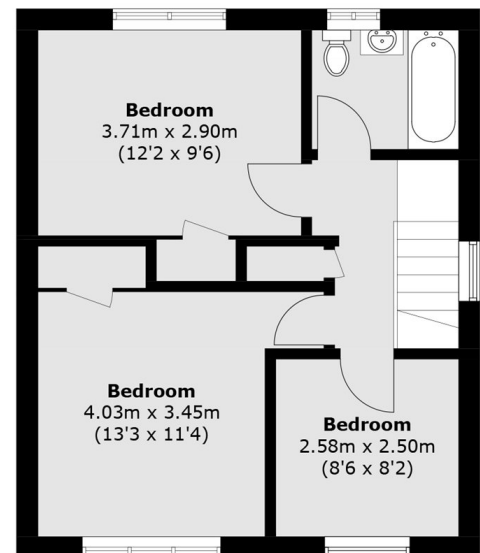
# Redlees Close, Isleworth, TW7



**Ground Floor**



**(Not Shown In Actual  
Location / Orientation)**



**First Floor**

Total area (approx.): 130.2 sq. m (1401.4 sq. ft)  
Outbuilding : 8.3 sq. m (89.3 sq. ft)