



Cranmer Avenue, W13

£425,000

A fantastic generous duplex home offering modern living in West Ealing in a sought after residential road. Spread across two floors this beautifully designed home offers stylish interiors, and premium finishes.

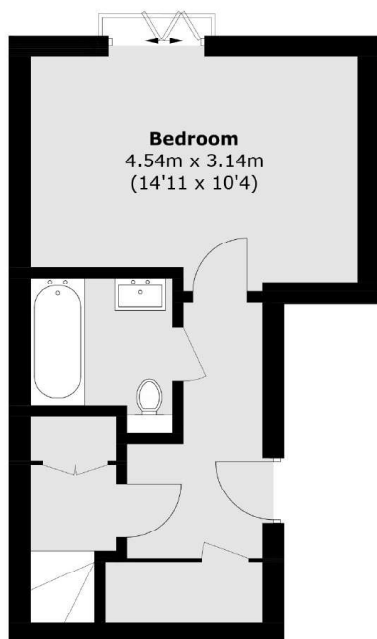
This home offers a well proportioned double bedroom with modern bathroom, upstairs the expansive open plan living, dining and kitchen area is flooded with natural light and is the heart of the home. Designed for contemporary living it features high end appliances, modern kitchen with sleek worktops and ample space for entertaining. A separate study area provides the perfect setup for working from home.

Located in a prime West London location this home benefits from excellent transport links with West Ealing offering easy access to Central London via the Elizabeth Line. The area is well known for schools, green spaces and a good selection of cafes, restaurants and shops.

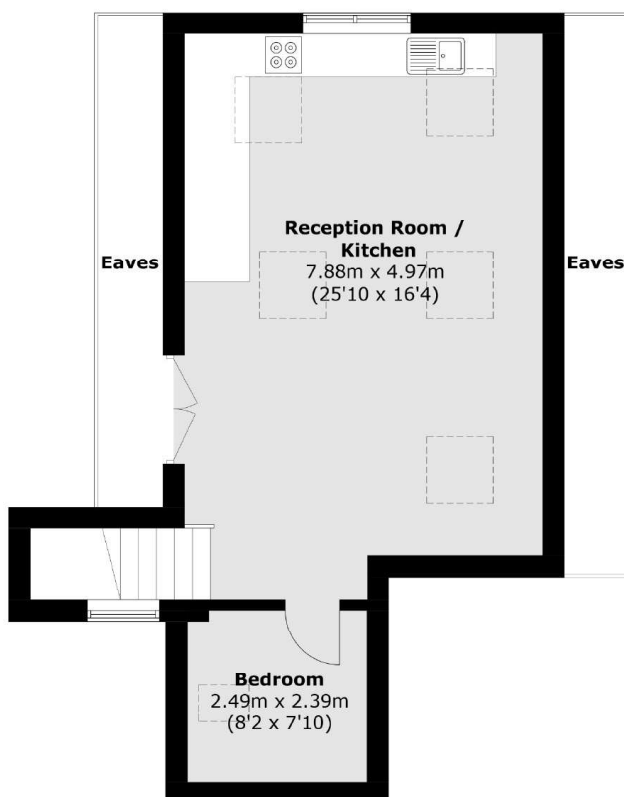
Features

- New Build
- High Specification
- Eco Friendly
- Close To Station
- Close To Shops

Cranmer Avenue,
London, W13



First Floor



Second Floor

Total area (approx.): 76.1 sq. m (819.1 sq. ft)
(Excluding Eaves)

Dexters

New Homes West London
20 Claremont Road
Surbiton
KT6 4QU

020 8614 1222

Energy Rating: . We aim to make our particulars both accurate and reliable. However they are not guaranteed; nor do they form part of an offer or contract. If you require clarification on any points then please contact us, especially if you're traveling some distance to view. Please note that appliances and heating systems have not been tested and therefore no warranties can be given as to their good working order.



Regulated
Estate Agent
and Letting Agent

dexters.co.uk