

# Dean House

FOREST OF DEAN

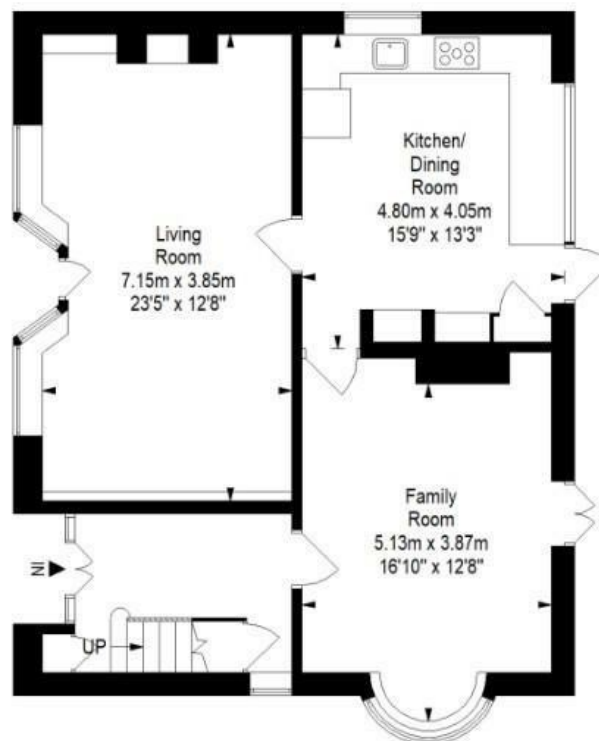
APPROXIMATE FLOOR AREA  
156.4 SQM / 1684 SQFT



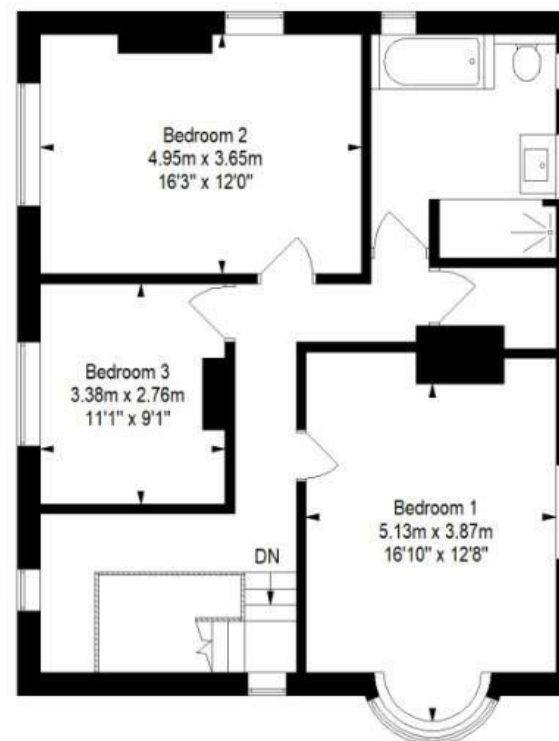
GARDEN STUDIO



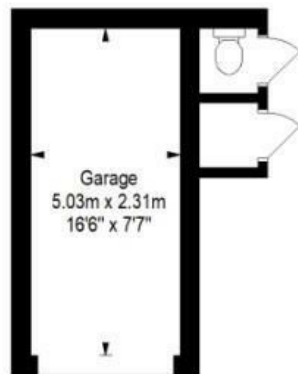
GROUND FLOOR



FIRST FLOOR



GARAGE



Boardwalk

# Parkend Road

BREAM, LYDNEY

£

£475,000

ZZ

3 Bedrooms

📍

GL15 6JT

🛁

1 Bathrooms

*This house is brilliant for summer and winter gatherings with friends and family. Whether it's Christmas Dinner on long tables in the room we still refer to as the shop, or BBQs with friends in the garden. The view from the large windows at the rear of the property will see you catch a glimpse of many animals, including sheep, chickens, owls, foxes and even birds of prey. The rear garden gate gives you instant access to the historical forest'*

