



George Row, SE16

£375,000

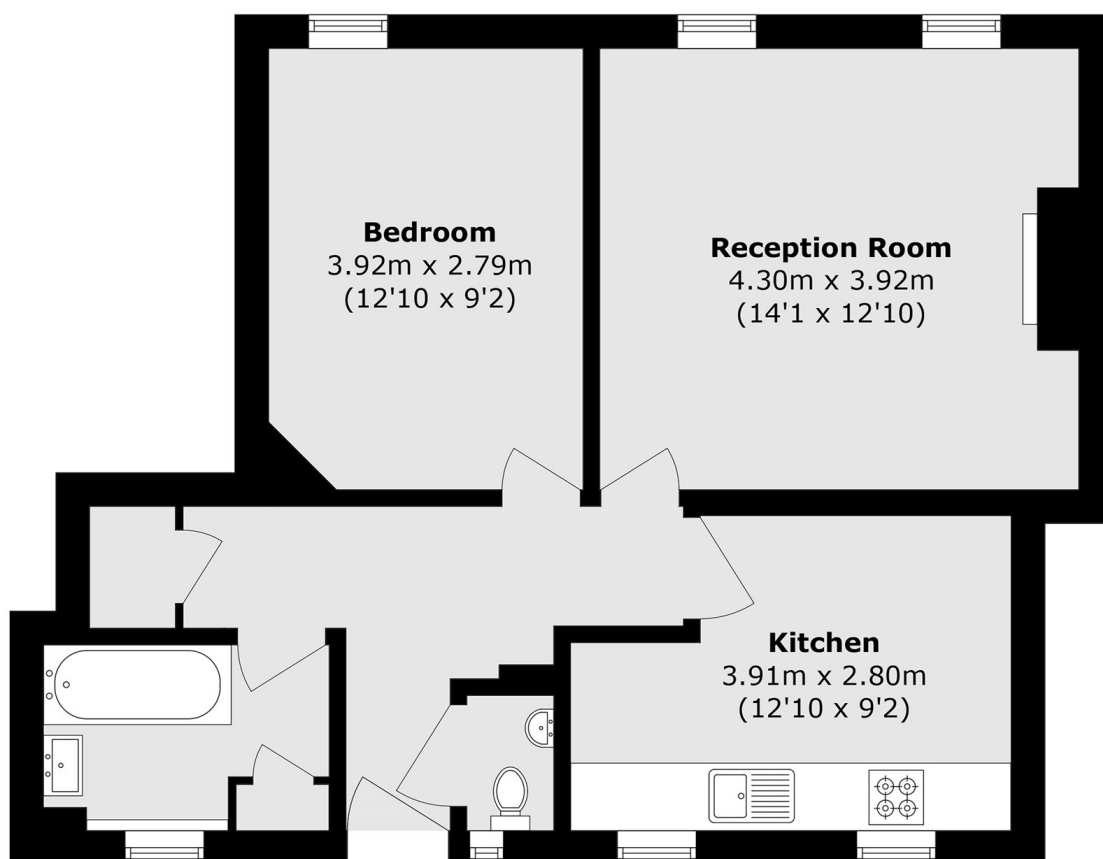
Situated on this quiet leafy street and moments from the river, this one double bedroom flat is in excellent condition and boasts a large living room, modern kitchen and bathroom and communal gardens.

Nickleby House is located only 0.2 miles from Bermondsey tube station and 0.6 miles from London Bridge. The development is surrounded by a wide range of shops, artisan food markets, restaurants and delis.

Features

- One Double Bedroom
- Fantastic Location
- Excellent Condition
- Light And Airy
- Communal Gardens
- Ample Storage

George Row, London, SE16



Total area (approx.): 53.4 sq. m (574.8 sq. ft)