



Croxall Road, Edingale

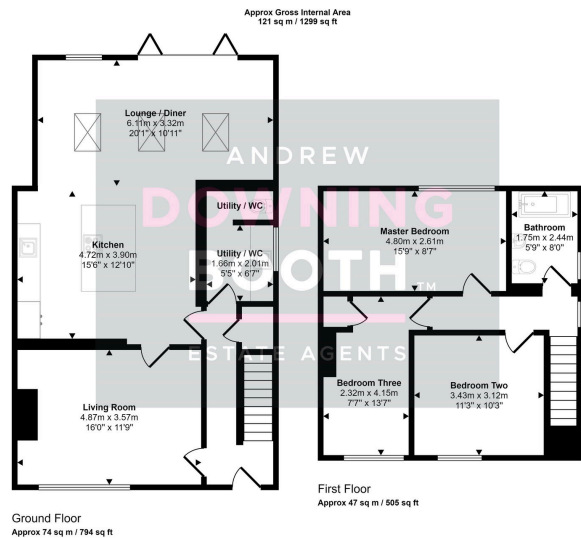
£337,000

3 1 2



A rare opportunity to acquire a fully renovated three bedroom home in a very popular location in John Taylor High School Catchment and Mary Howard Church of England Primary School catchment (one of Staffordshire's best rated Primary Schools). This exceptional property in the highly desirable village of Edingale comes to the market presented to exacting standards throughout, boasting a huge extension to the rear, and having undergone a complete renovation, where it is clear, the owners have a keen eye for detail, and no expense has been spared. The layout meets the modern day family requirements with the dimensions being spacious throughout. Comprising a through entrance hall, generous living room with wood burning stove, WC / utility room and one of the most outstanding family kitchen diners you will see. The kitchen is fitted with contemporary units, with the extended addition to the rear having skylights and bi-fold doors opening the room right up to the garden, making this home, an entertainer's dream. Upstairs is just as impressive, with three good sized bedrooms, none of which are a typical box room whilst there is also a fabulous family bathroom. Outside is a wonderful plot, with plenty of parking to the front, and a large rear garden with flagstone paved patio and lawn beyond. This home has to be viewed in order to be appreciated, so call and book in your visit today.





- Three Double Bedroom Semi-Detached Property
- Exceptional Open-Plan Living Kitchen Diner
- Naturally Bright With Bi-Fold Doors Out To The Garden
- John Taylor High School Catchment & The Desirable Mary Howard Primary School
- EPC Rating: D
- Beautifully Renovated £ Extended To A Very High Standard Throughout
- Very Popular Village Location & Attractive Rear Garden
- Spacious, Low Maintenance Driveway & No Upward Chain
- Utility Room With WC
- Council Tax Band: C

