



Sinclair Gardens, W14

£2,400 Per calendar month

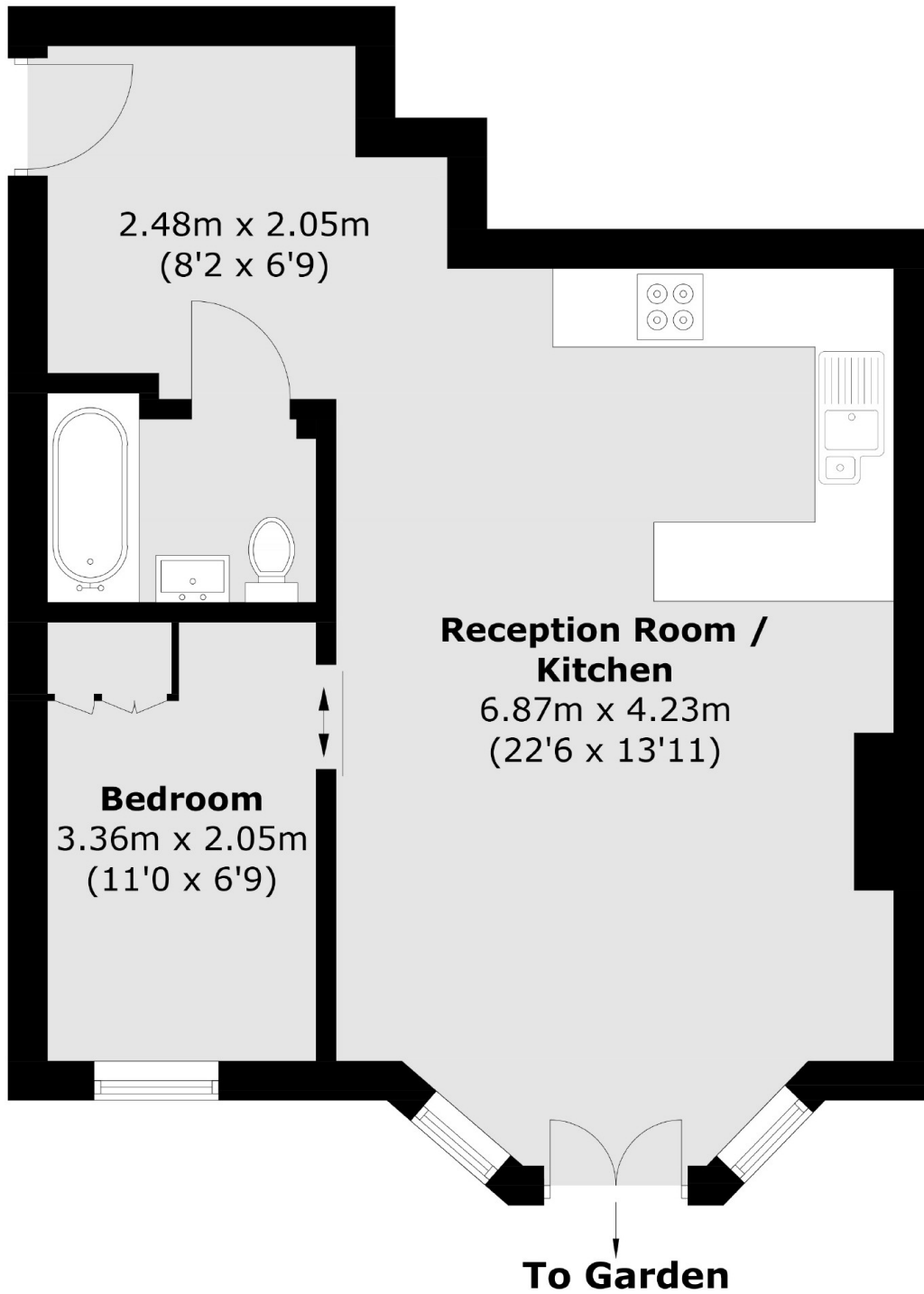
Set within this Victorian conversion is this newly refurbished one bedroom apartment. The property offers an open plan kitchen and reception room, a double bedroom and a private patio garden.

Sinclair Gardens is conveniently located to all local amenities of Shepherds Bush. Both Shepherds Bush and Kensington Olympia Stations are located under a quarter of a mile away.

Features

- Modern One Bedroom
- Wood Flooring
- Open Plan Living
- Luxury Bathroom
- Private Patio Garden
- Fully Furnished

Sinclair Gardens,
London, W14



Total area (approx.): 45.7 sq. m (491.9 sq. ft)