



## Nine Wells Road

Coleford, Gloucestershire, GL16 7AT

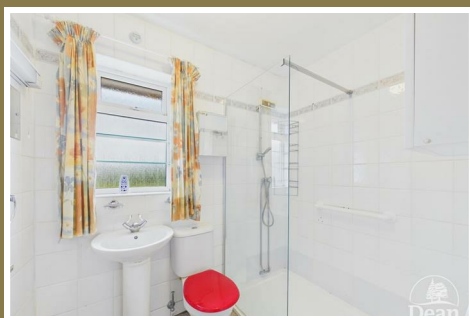
£389,950



A charming bungalow, offered to the market with no onward chain, set in a lovely position with a wrap-around private garden and beautiful woodland views. The accommodation comprises spacious lounge, fitted kitchen, rear porch, two well-proportioned bedrooms and a shower room.

Outside, the property benefits from a detached garage and generous wrap-around gardens, providing plenty of outdoor space to enjoy the peaceful surroundings. This delightful bungalow offers a fantastic opportunity for those seeking single-storey living in a tranquil setting.

Berry Hill is a well-regarded village on the edge of Coleford, enjoying a pleasant setting within the Forest of Dean and around 1.5 miles from the town centre. Forming part of the wider West Dean area, it offers a strong sense of community together with excellent access to surrounding woodland and countryside, making it particularly appealing to those who enjoy outdoor living. With Coleford's range of shops, amenities and attractions close by, Berry Hill combines a village atmosphere with everyday convenience, creating a popular setting for a wide variety of buyers.



Approached via front door into:

#### Entrance Hallway:

5'3" x 12'11" (1.62m x 3.95m)

Doors to bedrooms, kitchen, bathroom & lounge, loft access, power & lighting.

#### Lounge:

14'9" x 11'9" (4.52m x 3.60m)

Two double glazed UPVC windows, gas fireplace, power & lighting, TV point, radiator.

#### Kitchen:

14'9" x 9'10" (4.51m x 3.00m)

A range of eye level and base units, stainless steel sink with integrated drainer unit & mixer tap, space & plumbing for washing machine, eye level oven, electric hob with extractor hood above, consumer unit, power & lighting, double glazed UPVC window to side aspect, radiator.

#### Rear Porch:

9'2" x 5'2" (2.80m x 1.60m)

Double glazed UPVC window to rear aspect, power & lighting, door to rear garden.

#### Bedroom One:

Fitted wardrobes, radiator, double glazed UPVC window to front aspect, power & lighting.

#### Bedroom Two:

Fitted wardrobes, double glazed UPVC window to rear aspect, power & lighting, radiator.

#### Shower Room:

7'3" x 5'5" (2.21m x 1.67m)

Walk in shower, W.C., hand wash basin, frosted double glazed UPVC window, heated towel rail, wall mounted light with shaver point, wall mounted storage unit, extractor fan.

#### Outside:

Externally, the property enjoys a lovely garden with stunning woodland views, creating a peaceful and private setting to relax and unwind. The garden offers a wonderful blend of practicality and outdoor space, benefiting from a greenhouse, outside electric and a useful cupboard housing the boiler. To the front, there is off-road parking for multiple vehicles, providing ample space for family and visitors alike.

#### Garage:

10'4" x 19'5" (3.16m x 5.94m)

Up & over door, power & lighting, rear door.



Consumer Notes: Dean Estate Agents Ltd have prepared the information within this website/brochure with care and co-operation from the seller. It is intended to be indicative rather than definitive, without a guarantee of accuracy. Before you act upon any information provided, we request that you satisfy yourself about the completeness, accuracy, reliability, suitability or availability with respect to the website or the information, products, services, or related graphics contained on the website for any purpose.

These details do not constitute any part of any Offer, Contract or Tenancy Agreement.

Photographs used for advertising purposes may not necessarily be the most recent photographs, although every effort is made to update photographs at the earliest opportunity. Any reliance you place on such information is therefore strictly at your own risk. All photographic images are under the ownership of Dean Estate Agents Ltd and therefore Dean Estate Agents retain the copyright. You must obtain permission from the owner of the images to reproduce them.

Tenanted Properties – we are not always able to show the most recent condition of a property due to tenants' privacy and we may choose to show the photographs of the property when it was last vacant to at least allow clients some idea of the internal condition. Therefore, we would of course, urge you to view before making any decisions to purchase or rent the property and before any costs.

Energy Performance Certificates are supplied to us via a third party and we do not accept responsibility for the content within such reports.

PRC Certificates – Some ex-local authority properties have been repaired in recent years using the PRC Scheme wherein a certificate has been produced by a qualified property engineer. This certificate does not imply the suitability for a mortgage approval and you must satisfy yourself of the work carried out that may meet your lenders criteria.

As with leasehold property or new build development sites, you are likely to be responsible for a contribution to management charges and/or ground rent or a contribution to the development service charge. Please enquire at the time of viewing.

You may also incur fees for items such as leasehold packs and, in addition, you will also need to check the remaining length of any lease before you complete a mortgage application form.

Please ask a member of our team for any help required before committing to purchase a property and incurring expense.

## Road Map



## Hybrid Map



## Terrain Map



## Floor Plan

**Floor 0 Building 1**

**Floor 0 Building 2**

**Approximate total area<sup>(1)</sup>**  
852 ft<sup>2</sup>  
79.2 m<sup>2</sup>

(1) Excluding balconies and terraces

Calculations reference the RICS IPMS 3C standard. Measurements are approximate and not to scale. This floor plan is intended for illustration only.

**GIRAFFE 360**

## Viewing

Please contact our Coleford Office on 01594 835751 if you wish to arrange a viewing appointment for this property or require further information.

## Energy Efficiency Graph



These particulars, whilst believed to be accurate are set out as a general outline only for guidance and do not constitute any part of an offer or contract. Intending purchasers should not rely on them as statements of representation of fact, but must satisfy themselves by inspection or otherwise as to their accuracy. No person in this firm's employment has the authority to make or give any representation or warranty in respect of the property.