



BEECH ROAD, WROXHAM
£175,000 FREEHOLD

WATERSIDE
ESTATE AGENTS





BEECH ROAD, WROXHAM, NORFOLK NR12 8TP

- Wet boathouse within walking distance of the centre of Wroxham
- Off road parking
- Garden area

Hidden away in an incredibly sought after location just off the River Bure and within walking distance of the centre of Wroxham is this charming wet boathouse.

Thought to have been built in the 1980s, this appealing timber boatshed offers an internal mooring measuring approximately 24'6" x 9'0" and discreetly sits within a plot measuring approximately 65ft x 35ft with off road parking and an attractive garden area perfect for BBQs, launching kayaks or paddleboards, and offering a wonderfully tranquil setting for fishing.

Providing privacy and peace and quiet, and yet only 100 metres from the main river with access to the full Broads network.

A rare opportunity, early viewing is encouraged.

ADDITIONAL INFORMATION

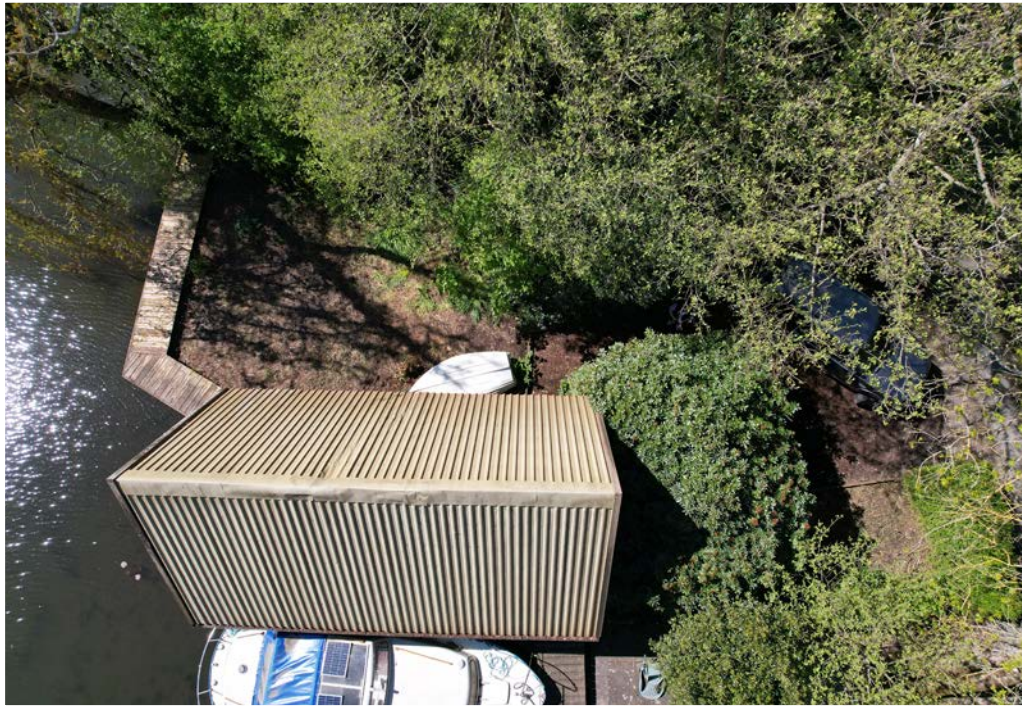
Tenure: Freehold.

No services connected.

Whilst it is our intention that these sales particulars offer a fair and accurate account, they are provided for guidance purposes only and do not constitute part of any offer or contract.

All measurements are approximate and we have not tested any equipment or services, and no warranty is given or implied that these are in working order.

Prospective purchasers are advised to satisfy themselves by inspection or by further investigation via their solicitor or surveyor.





WATERSIDE ESTATE AGENTS
Broads Haven, Potter Heigham, Norfolk NR29 5JD

Tel: 01692 670400
Email: sales@watersideestateagents.com
www.watersideestateagents.com