

28 The Avenue, £550,000

(Other charges apply)

RICHMOND
VILLAGES

Part of Bupa

2F



EPC - B



2 bedroom second floor apartment

This beautifully appointed two-bedroom independent living apartment is ideally positioned on the second floor with a desirable west-facing aspect. Overlooking the peaceful courtyard terraces, the apartment offers a bright and peaceful setting, complemented by convenient access to an exceptional range of on-site amenities including a restaurant, bar, library, wellness spa and landscaped gardens.

Specification

- Light-filled living room with a designated dining area and double doors opening onto a private west-facing balcony.
- Contemporary fitted kitchen with granite work surfaces and integrated Neff appliances including a double oven, electric hob with extractor, integrated dishwasher and integrated fridge freezer.
- Separate utility room with additional storage, with plumbing for a washing machine and tumble dryer.
- Very generously sized main bedroom featuring fitted wardrobes with double doors, multiple power sockets and large bay window overlooking the courtyard.
- Modern shower room with walk-in shower, WC and wash basin.
- Well-proportioned second double bedroom suitable for guest bedroom and study.
- Stylish bathroom including bath with overhead shower, WC and wash basin within a fitted vanity unit, complemented by a heated towel rail.
- TV and satellite points*.
- Well stocked flower borders and lawns maintained by the Village Gardeners.
- Allocated parking space for one car.

*Satellite subscription not included.

Important Notice: These particulars are intended to give a fair and substantially correct overall description. Other fees and charges apply, please contact the Village Advisers for further details. Properties are sold on a 125-year lease, which commenced in 2019.

01386 862 222

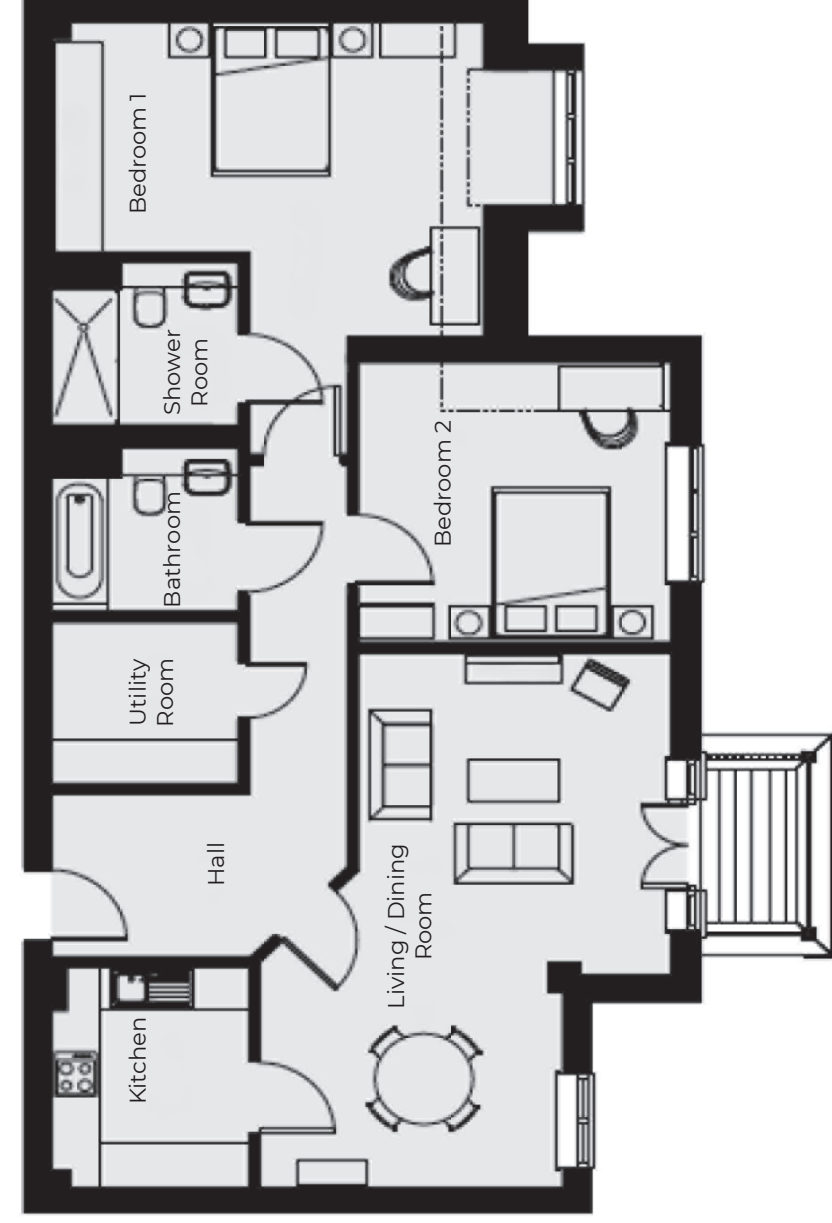
woodnorton@richmond-villages.com

Richmond Villages Wood Norton,

Evesham Road, Wood Norton, Evesham, Worcestershire WR11 4TY

28 The Avenue

Second Floor



Kitchen	2941mm x 2445mm 9'8" x 8'
Living Room	7099mm x 3816mm 23'3" x 12'6"
Bedroom 1	6116mm x 5763mm 20'1" x 18'11"
Shower Room	2300mm x 2180mm 7'7" x 7'2"
Bedroom 2	3816mm x 3718mm 12'6" x 12'2"
Bathroom	2300mm x 2180mm 7'7" x 7'2"
Utility	2300mm x 2171mm 7'7" x 7'1"

These particulars are intended to give a fair and substantially correct overall description.

Measurements have been taken at 1500mm skimming height.

All dimensions are approximate. Bedroom measurements include the wardrobe if applicable. Room measurements include bay windows if applicable.

Furniture layout is to give an indicative impression. Although all efforts have been made to ensure its accuracy at time of print dimensions, fixtures, fittings, finishes and specifications are subject to change without notice.

The properties are sold unfurnished.

