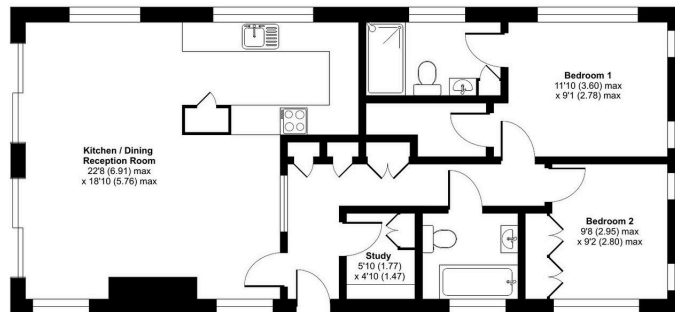


Occupying a premium position within the gated Marston Edge Residential Park, this beautifully presented 44' x 20' Omar Accent park home offers luxurious single-storey living with stunning uninterrupted countryside views. Maintained to an 'as new' standard, the home boasts a bright and spacious open-plan living, dining and kitchen area with vaulted ceiling and glazed atrium, creating a wonderfully light and airy feel. The contemporary kitchen is fully fitted with integrated appliances, while two double bedrooms include a stylish principal suite with en-suite shower room. A separate study adds flexibility, complemented by a modern main bathroom. Outside, a raised decked terrace and garden provide the perfect setting to enjoy the views, with driveway parking completing the package. Exclusively for the over-50s with year-round occupancy.



Marston Edge, Lower Quinton, Stratford-upon-Avon, CV37

Approximate Area = 822 sq ft / 76.3 sq m
For identification only - Not to scale



GROUND FLOOR

Floor plan produced in accordance with RICS Property Measurement 2nd Edition, incorporating International Property Measurement Standards (IPMS2 Residential). © richrecom 2025. Produced for The Park Home Agency Ltd. REF: 1431905



01793 230185

sales@theparkhomeagency.co.uk

Agents Notes: All measurements are approximate and quoted in metric with imperial equivalents and for general guidance only and whilst every attempt has been made to ensure accuracy, they must not be relied on. The fixtures, fittings and appliances referred to have not been tested and therefore no guarantee can be given that they are in working order. Internal photographs are reproduced for general information and it must not be inferred that any item shown is included with the property. For a free valuation, contact the numbers listed on the brochure