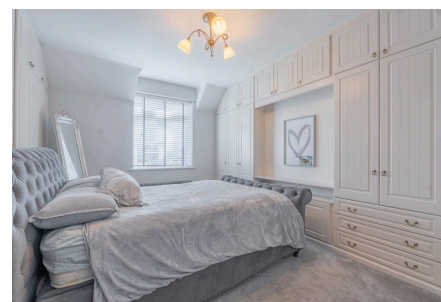


Stratford Road, Hockley Heath, Solihull, B94 6NY

Offers Over £340,000

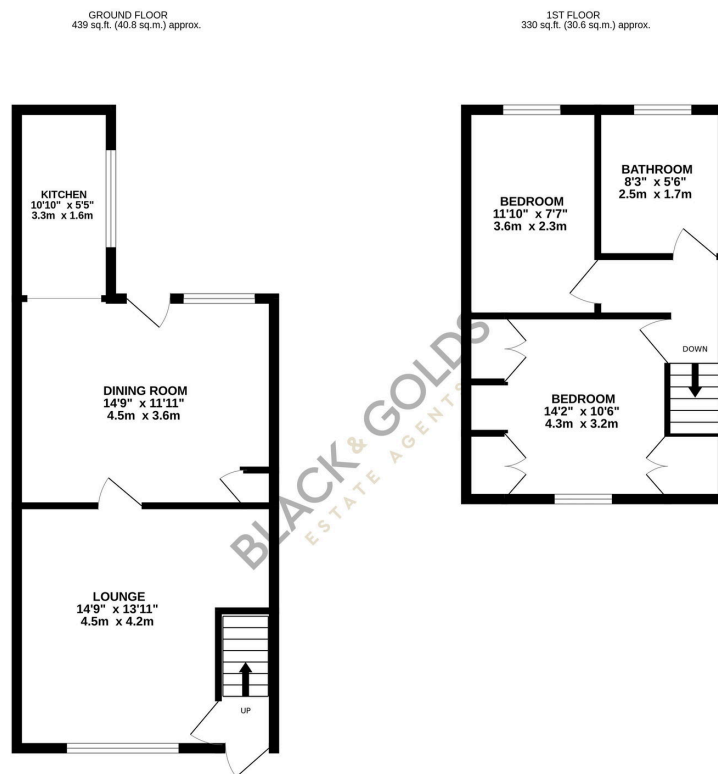
🛏 2 🚿 1 🚗 1



Cosy & Comfortable Two-Bedroom Home, Spacious Living Areas, Well-Presented Throughout, Excellent Location Between Countryside & Convenience

Key Features

- Cosy and comfortable two-bedroom home
- Spacious lounge with great natural light
- Functional fitted kitchen
- Family bathroom
- Ideal for first-time buyers or downsizers
- Well-presented throughout
- Separate dining room ideal for entertaining
- Two well-proportioned bedrooms
- Practical layout across both floors
- Sought-after location balancing rural charm and everyday convenience



TOTAL FLOOR AREA: 769 sq.ft. (71.4 sq.m.) approx.
Whilst every effort has been made to ensure the accuracy of the floorplan contained herein, measurements of doors, windows, rooms and any other items are approximate and no responsibility is taken for any error, omission or mis-statement. This plan is for illustrative purposes only and should be used as such by any prospective purchaser. The services, systems and appliances shown have not been tested and no guarantee as to their operability or efficiency can be given.
Made with Metropix 02/20