



# SIMPLE LIFE



SIMPLE LIFE



## Clarence Street, Salford, M7

£1,250 Per Month

A Striking development of apartments in Salford, just a 20-minute walk from Manchester's Deansgate. Inspired by astronomer William Crabtree who made the area his home in the 1600s, Empryan translates as the highest heaven – and you can call a slice of it your own!

The Halley is a two bedroom apartment ideally designed for shared accommodation, inspired by Edmond Halley, a British astronomer famous for computing the orbit of Halley's Comet, but also for his collaborations with his peers. When you enter the Halley you walk straight into the hub of the home; the kitchen/diner with integrated appliances gives you an ideal entertaining space.

As you go further into the apartment, the room becomes a good sized living area with French windows opening onto a Juliet balcony on the ground floor or full balcony on upper floors bringing in natural light and enhancing the property's views.

The two bedrooms are equal in size mirroring each other on either side of the apartment, each with a fully fitted bathroom, with one also having access through to the kitchen/diner.

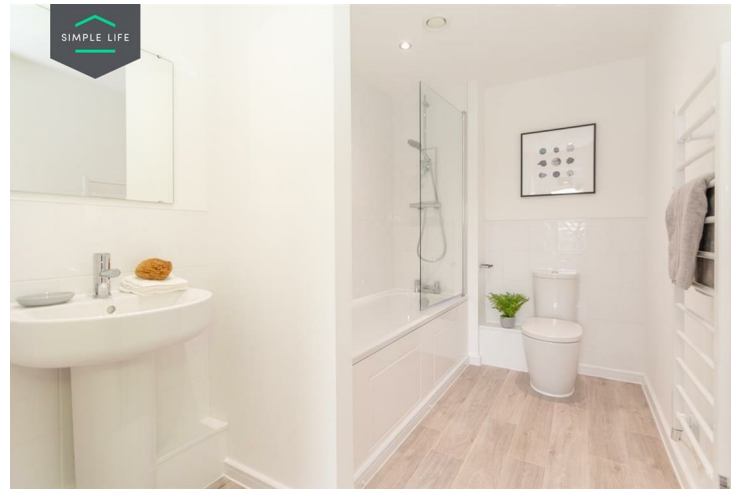
With 298 apartments spread across six blocks either side of the newly renovated Church of Ascension, we have a range of 1, 2 and 3 bedroom properties available including those designed specifically for living together.

Situated directly opposite Green Grosvenor Park and a stone's throw away from the river Inwell, these homes have something to offer to all. Ideal for professionals, young families or couples wanting an easy commute without the city centre price tag.

Access to the site is via Lower Broughton Road to the West or Great Clowes Street to the East, with entrances to the blocks on Clarence Street. Postcode M7 1GA will bring you to the area.

Deposit £1430  
Holding Deposit £280  
Unfurnished  
Council Tax B  
Available 31st July 2026





## Key Features

- Secure gated parking available on request \*FEES APPLY\*
- Integrated kitchen appliances
- Modern, white kitchen units
- Light wash wood effect flooring
- White blinds in bedrooms
- Fitted wardrobes to main bedroom
- Washing/drying machine
- Dark ash style worktops
- Light grey carpets in the bedrooms

## Location

