



Lyndhurst Avenue, KT5
£1,149,950

Dexters



Lyndhurst Avenue, KT5

This five bedroom semi-detached property has been renovated to a high standard throughout and rear and loft creating the perfect family home. It is offered to the market with a landscaped garden, off street parking and no onward chain.

The ground floor has a substantial rear extension with a brand new open plan kitchen/dining/reception room with large sliding doors on to the garden, a utility room and downstairs bathroom. There is also a reception room to the front of the property as well as a bedroom and study room.

On the first floor, there are three bedrooms and a family bathroom. The main bedroom is on the second floor, along with an en suite shower room and access to the eaves for storage.

Outside, there is a beautiful landscaped rear garden with a studio/office or shed and to the front, there is a driveway and a front garden.

Lyndhurst Avenue is a peaceful residential road with easy access to the A3 and approximately half a mile away from Tolworth train station, with its quick links to London Waterloo. There are also an array of fantastic nurseries and primary and secondary schools on its doorstep.

Features

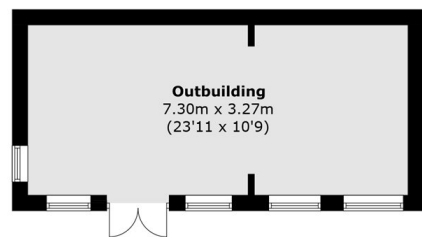
- Beautifully Renovated
- Five Bedrooms
- Large Open Plan Kitchen
- Two Bathrooms & WC
- Off-Street Parking
- No Onward Chain



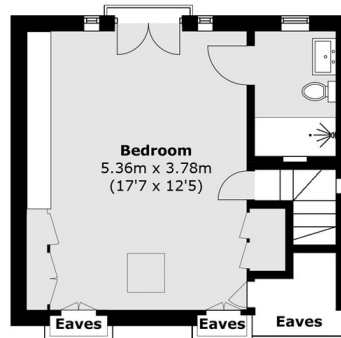




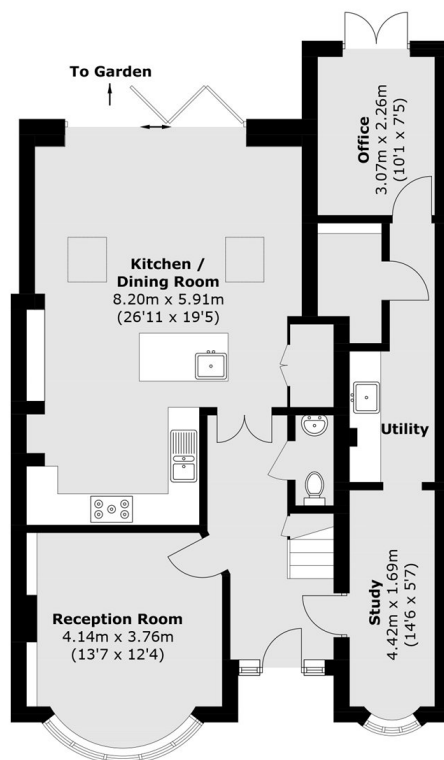
Lyndhurst Avenue, Surbiton, KT5



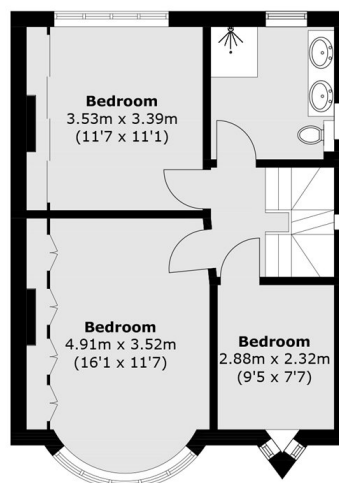
Ground Floor



Second Floor



Ground Floor



First Floor

Total Internal area (approx.): 170.8 sq. m (1,838.5 sq. ft)

Outbuilding area (approx.): 24.0 sq. m (258.4 sq. ft)