



## Olympia House Upper

£75,000

- NO CHAIN
- City centre - well located
- Stunning views of the city
- READY TO MOVE IN CONDITIONS
- Council tax band C
- Shared ownership scheme
- EPC Rating: C



 2  1  1



## About the property

This flat for sale is in great condition and is part of a shared ownership scheme with Hedyn Homes, making it an ideal opportunity for first-time buyers or any eligible buyer looking for a modern city centre apartment.. The property is conveniently located near public transport links, local amenities, and is in the city centre.

The flat features two double bedrooms, offering ample space for occupants. It also includes a single bathroom and an en suite off the master bedroom and one reception room, providing a comfortable environment for relaxation or entertaining guests. The modern kitchen is well-equipped and offers phenomenal views of the city.

With an EPC rating of C, this flat is relatively energy efficient, which could potentially save you money on your energy bills. The property falls under council tax band C.

The overall condition of the property is good, meaning it's ready to move into without the need for immediate repairs or renovations.

In summary, this flat offers a fantastic opportunity. Its location in relation to key amenities and transport links, along with its good condition, makes this property a desirable choice.



## Accommodation

### Entrance Hall

### Kitchen/Living Area

16' 3" plus recess x 16' 6" ( 4.95m plus recess x 5.03m )

### Bedroom 1

15' 4" x 9' 10" ( 4.67m x 3.00m )

### En Suite

### Bedroom 2

14' 3" x 9' 6" ( 4.34m x 2.90m )

### Bathroom

12' 10" x 6' 5" ( 3.91m x 1.96m )

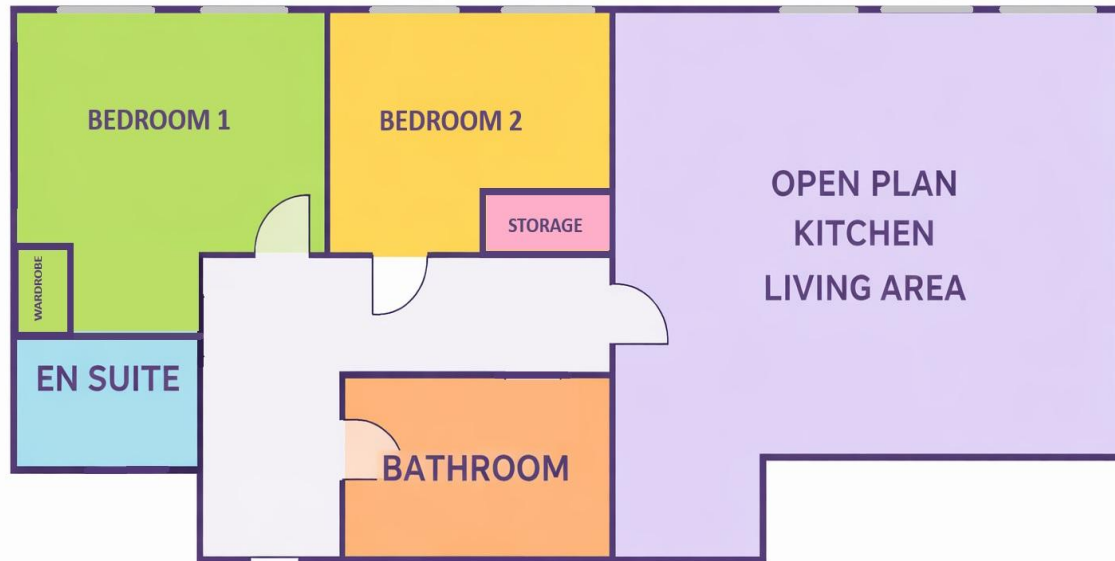
### Agents Note

The property is available through a 50% shared ownership scheme with Hedyn Homes.

01633 221892

newport@peteralan.co.uk

## Floorplan



## Important Information

Note while we endeavour to make our sales details accurate and reliable, if there is any point which is of particular interest to you, please contact the office and we will be pleased to confirm the position for you. We have not personally tested any apparatus, equipment, fixtures, fittings or services and cannot verify they are in working order or fit for their purposes. Nothing in these particulars is intended to indicate that carpets or curtains, furnishings or fittings, electrical goods (whether wired or not). Gas fires or light fittings or any other fixtures not expressly included form part of the property offered for sale. This computer generated Floorplan, if applicable, is intended as a general guide to the layout and design of the property. It is not to scale and should not be relied upon for dimensions. Tenure: We cannot confirm the tenure of the property as we have not had access to the legal documents. The buyer is advised to obtain verification from their solicitor or surveyor.

Peter Alan Limited is registered in England and Wales under company number 2073153, Registered Office is Cumbria House, 16-20 Hockliffe Street, Leighton Buzzard, Bedfordshire, LU7 1GN. VAT Registration Number is 500 2481 05. For activities relating to regulated mortgages and non-investment insurance contracts, Peter Alan Limited is an appointed representative of Connells Limited which is authorised and regulated by the Financial Conduct Authority. Connells Limited's Financial Services Register number is 302221. Most buy-to-let

