

Property ref: 173194

Rangeley Place, Reading, RG2 6AL

£1,695 PCM

HASLAM'S
Lettings



A rare opportunity to acquire this modern mews house in the exclusive Green Park development. The property benefits from two double bedrooms, open plan living / kitchen area, two bathrooms and garage parking.

Reading Borough Council tax band C.

Broadband/Mobile Info: Connections available. For an indication of specific speeds and supply of Broadband and Mobile, we advise applicants go to the Ofcom website Broadband and Mobile Coverage Checker.

Available 12/08/2026

- Two double bedrooms; Master with en-suite
- Garage parking
- Close links to M4
- Open plan living room/kitchen with Juliette balcony
- Gas central heating; EPC rating B
- Unfurnished; Managed by LANDLORD

*Fees For Assured Periodic Tenancies: when you rent a property from us you will be required to pay a sum equivalent to one weeks' rent for a holding deposit. Upon successful application, this amount will be off set against your first months' rent. You will also be required to pay a security deposit equivalent to 5 weeks' rent which will be held and protected in line with Deposit legislation. For more information about our fees please visit: www.haslams.net
Fees for all other tenancies (Non Housing Act Tenancies / Company Lets): when you rent a property from us we will charge you a one-off fee per property. This charge is the equivalent of 15 days of the monthly rental charge (+VAT) with a minimum fee of £450 (inc.VAT) up to a maximum of £650 (inc.VAT). Other fees may apply depending on your circumstances.

0118 960 1055

lettings@haslams.net www.haslams.net

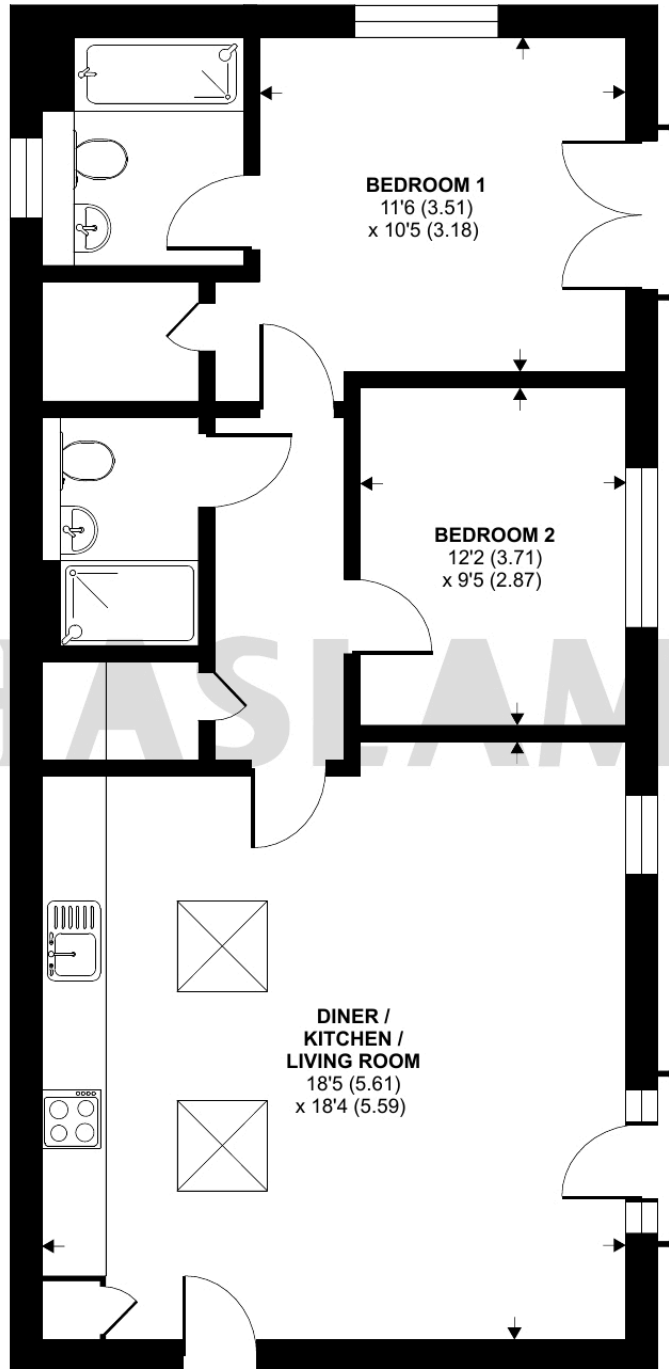
Haslams Estate Agents Ltd, 159 Friar Street, Reading, Berkshire, RG1 1HE



Rangeley Place, Reading, RG2

Approximate Area = 748 sq ft / 69.4 sq m

For identification only - Not to scale



FIRST FLOOR

 Floor plan produced in accordance with RICS Property Measurement 2nd Edition, Incorporating International Property Measurement Standards (IPMS2 Residential). © nchecom 2025. Produced for Haslam's. REF: 1317369