



John Islip Street, SW1P

£545,000

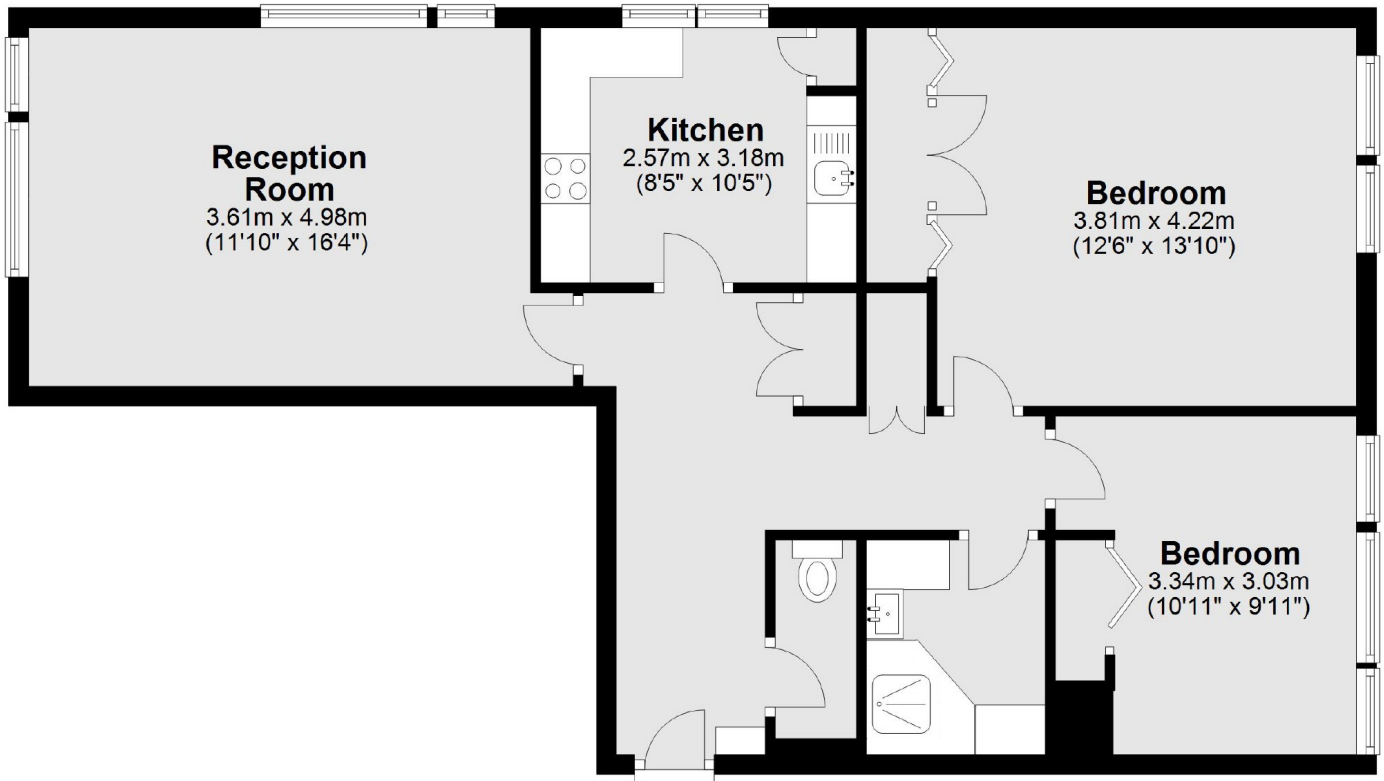
A two bedroom apartment with partial river views in a modern purpose built block. This property benefits from 24-hour concierge, two lifts and a communal roof terrace which provides 360 degree views across London.

This is an excellent location; Millbank Court is situated behind The Tate Gallery and transport links are very good with Pimlico, Victoria and Westminster tube stations nearby.

Features

- Communal Heating/Hot Water
- Communal Roof Terrace
- 24-Hour Concierge
- Share Of Freehold
- River Views
- Two Lifts

John Islip Street, London, SW1P



Total area: approx. 75.9 sq. metres (816.5 sq. feet)