

25 Burt Terrace
Walbottle
Newcastle Upon Tyne
NE15 9RY

Offers Over
£197,500



25 Burt Terrace
Walbottle
Newcastle Upon Tyne
NE15 9RY

- Stunning 3 Bedroom terraced house
- Exceptional standard throughout
- Modern décor
- Uninterrupted views
- Beautifully extended
- Idyllic setting with greenbelt views
- Generously sized double bedrooms
- Parking for up to four cars

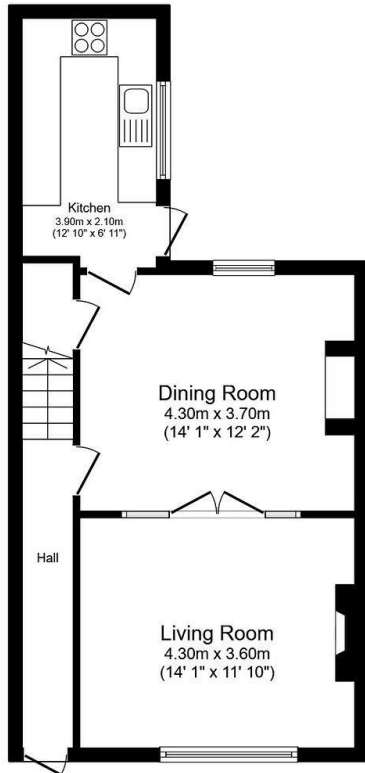




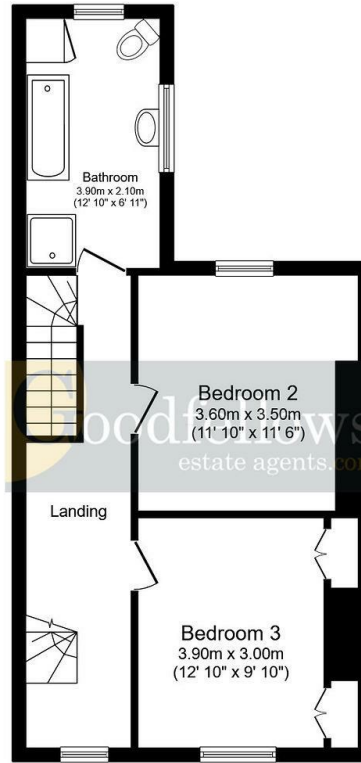


25 Burt Terrace, Walbottle, Newcastle Upon Tyne, NE15 9RY

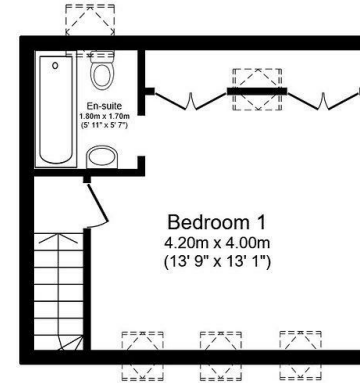




Ground Floor
Floor area 46.9 sq.m. (505 sq.ft.)



First Floor
Floor area 46.9 sq.m. (504 sq.ft.)



Second Floor
Floor area 24.4 sq.m. (262 sq.ft.)

Total floor area: 118.1 sq.m. (1,271 sq.ft.)

This floor plan is for illustrative purposes only. It is not drawn to scale. Any measurements, floor areas (including any total floor area), openings and orientations are approximate. No details are guaranteed, they cannot be relied upon for any purpose and do not form any part of any agreement. No liability is taken for any error, omission or misstatement. A party must rely upon its own inspection(s).



EPC Rating: D
Council Tax Band: B

Whilst every care has been taken to prepare these particulars, they are for guidance purposes only. All measurements are approximate and whilst every care has been taken to ensure their accuracy, they should not be relied upon and potential buyers/tenants are advised to recheck the measurements. The agent has not tested any equipment, services, fixtures or fittings and makes no representation regarding their condition.

CONTACT

128 The Roman Way, West Denton,
Newcastle upon Tyne, NE5 5AD

E:
westdenton@goodfellowsestateagents.com
T: 0191 2677500

