



Guide Price
£425,000

Freehold

3x  1x  1x 

**Oliver Crescent,
Farningham, Dartford,
Kent, DA4**

OVER 60?

Secure this property
for up to **59% less!**

Wards
Helping you move forwards



Main features

- Potential to extend subject to planning
- Large garden
- Recently renovated bathroom
- Communal park close by perfect for families
- Close to local pubs and restaurants

Accommodation

GROUND FLOOR

Porch: 6'1 x 2'7 (1.86m x 0.79m)

Hallway

Lounge/Dining Area: 21'1 x 12'8 (6.43m x 3.86m)

Kitchen: 7'8 x 6'7 (2.34m x 2.01m)

FIRST FLOOR

Landing

Bedroom 1: 11'1 x 10'11 (3.38m x 3.33m)

Bedroom 2: 11'11 x 9'10 (3.63m x 3.00m)

Bedroom 3: 7'6 x 7'1 (2.29m x 2.16m)

Shower Room: 7'3 x 4'5 (2.21m x 1.35m)

OUTSIDE

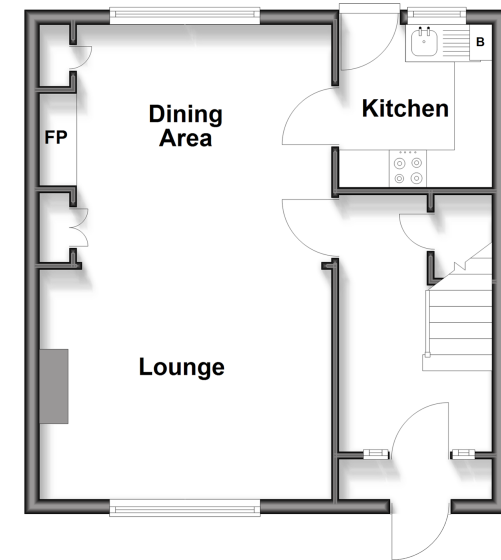
Front Garden

Garage

Rear Garden

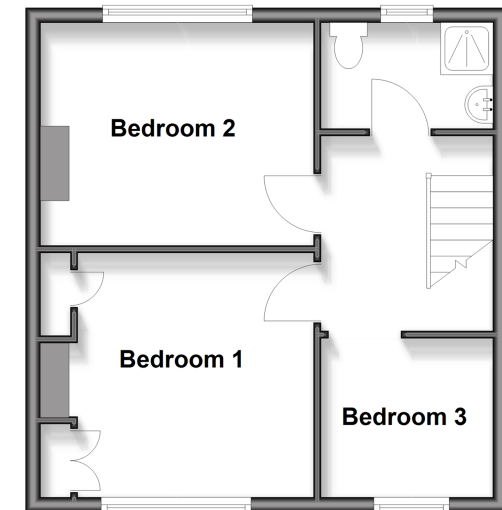
Ground Floor

Approx. 38.5 sq. metres (414.4 sq. feet)



First Floor

Approx. 38.5 sq. metres (414.4 sq. feet)



Call Eynsford - 01322 862844 ■ wardsofkent.co.uk

■ Through a Homewise Home For Life Plan people aged 60+ can secure this property for up to 59% less, by purchasing a Lifetime Lease



12520349/20260318/MC/SJ