



Leinster Square, W2

£650,000

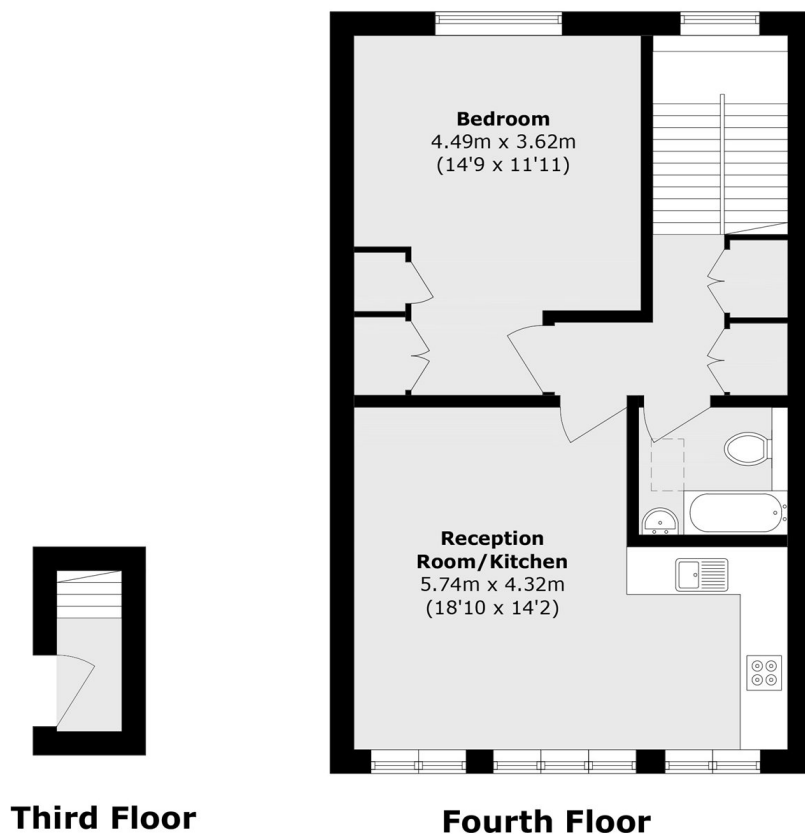
A spacious top floor, one double bedroom apartment in a Victorian conversion. The property has an open plan reception, with room to dine, built-in storage and pleasant views from both aspects.

Leinster Square is well situated between Westbourne Grove and Hyde Park. Located just moments from the many shops and restaurants of Queensway, Westbourne Grove & Notting Hill, with transport links from Paddington.

Features

- One Double Bedroom
- Open Plan
- Storage
- Victorian Conversion
- Share of Freehold
- Notting Hill

Leinster Square, London, W2



Total area (approx.): 50.9 sq. m (547.8 sq. ft)

Dexters

Westbourne Grove
120 Westbourne Grove
London
W11 2RR
Sales
020 7313 3600

Energy Rating: D. We aim to make our particulars both accurate and reliable. However they are not guaranteed; nor do they form part of an offer or contract. If you require clarification on any points then please contact us, especially if you're traveling some distance to view. Please note that appliances and heating systems have not been tested and therefore no warranties can be given as to their good working order.

 **RICS** | Regulated
Estate Agent
and Letting Agent

dexters.co.uk