



19 Thomas Christian Way  
Bottisham, CB25 9DX

Guide price £835,000



## 19 Thomas Christian Way Bottisham, CB25 9DX

- No chain
- Countryside views
- Large 5 bedroom home
- Popular village location
- Double garage

An imposing and spacious 5 bedroom detached property with a double garage and far reach countryside views, located in a quiet spot in the well served village of Bottisham.

19 Thomas Christian Way is a wonderful family home, offering versatile accommodation of over 2,100sqft, perfect for those looking for rural living while still being close to village amenities. On the ground floor there is a wide and welcoming central entrance hall with understairs storage. The living room has a lovely triple aspect and a feature gas fire place, as well as sliding glazed doors to the adjoining garden room. There is another sitting room to the front of the property with an attractive bay window, a very useful separate study and downstairs WC.

The kitchen is at the rear of the property enjoying views into the beautiful garden. It's fitted with a range of cabinets under a granite worktop. There are two sinks, one with an InSinkEerator and a boiling water tap, as well as a range cooker and integrated dishwasher. A separate utility area houses laundry appliances, offers further storage options and provides for side access. Adjacent to the kitchen is the dining space with flows through to the large and light garden room with sliding doors to a paved area, with awning over, and into the south west facing garden.





The garden has a good sized lawn with flower beds and mature shrubs to the borders, a raised seating area and access to the front of the property on both sides. Rather uniquely, there is also direct access from the garden to the adjacent countryside footpath, perfect for evening dog walks.

On the first floor are the five bedrooms, four of which are good sized doubles. Two of the bedrooms face westerly with views over fields and to Angelsey Abbey beyond. The primary suite is comprised of a large dual aspect double bedroom with walk-in wardrobe and further integrated cupboards. The ensuite is stylishly finished with walk-in shower, underfloor heating and automatic lighting.

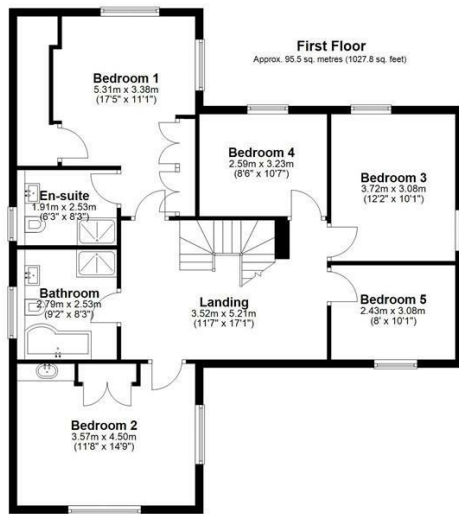
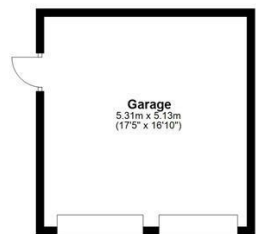
The main bathroom is similarly styled with feature lighting, heated towel rails and heated towel shelving, bath and walk in shower.

There is parking for several cars at the front of the property as well as a double garage. Found at the end of a no-through residential road, the property is quietly located in a corner plot.

Bottisham is a particularly well-served village located east of Cambridge. Amenities include Bottisham Village College, a public house, shop, GP surgery, library and primary school. There are public transport links to Cambridge and Newmarket. and Cambridge North station is approximately 7 miles away.

///bricks.niece.baffle



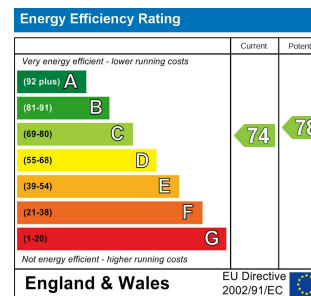


Main area: Approx. 196.8 sq. metres (2118.0 sq. feet)  
Plus garages: approx. 27.2 sq. metres (292.2 sq. feet)

Drawings are for guidance only  
Plan produced using PlanUp.



## Energy Efficiency Graph



Tenure: Freehold  
Council tax band: G

These particulars, whilst believed to be accurate, are set out as a general outline only for guidance and do not constitute any part of an offer or contract. Intending purchasers should not rely on them as statements of representation of fact, but must satisfy themselves by inspection or otherwise as to their accuracy. No person in this firm's employment has the authority to make or give any representation or warranty in respect of the property.

Cambridge Victoria  
154-156 Victoria Road, Cambridge CB4 3DZ  
01223 439 888 theteam@grayandtoynbee.com

Cambridge South  
Adkins Corner, Perne Road, Cambridge CB1 3RU  
01223 439 555 theteam@grayandtoynbee.com

Waterbeach  
17 High Street, Waterbeach, CB25 9JU  
01223 949 444 waterbeach@grayandtoynbee.com