



St Martin's Lane, Covent Garden, WC2N
£350 pw

› Studio › 1 Bathroom › Unfurnished

TAVISTOCKBOW
RESIDENTIAL



- › Studio apartment
- › Modern bathroom
- › Open plan kitchen
- › Wood floors
- › Modern appliances
- › Unfurnished
- › Available immediately
- › Modern bathroom
- › Good built in storage
- › Close to Leicester Square & Covent Garden tube stations

This bright studio apartment overlooks the Noel Coward Theatre on St Martins Lane and is situated on the 1st floor (with lift). The kitchen is open plan but tucked away from the reception / sleeping area. There is a contemporary shower room and plenty of built in storage. Available immediately, unfurnished.





WHAT WE LOVE:

- Good size studio room
- Fantastic Covent Garden location
- In the middle of theatreland (opposite Noel Coward)
- Overlooks Cecil Court with its legendary book shops
- Located on walk way where they filmed Mary Poppins & Harry Potter.

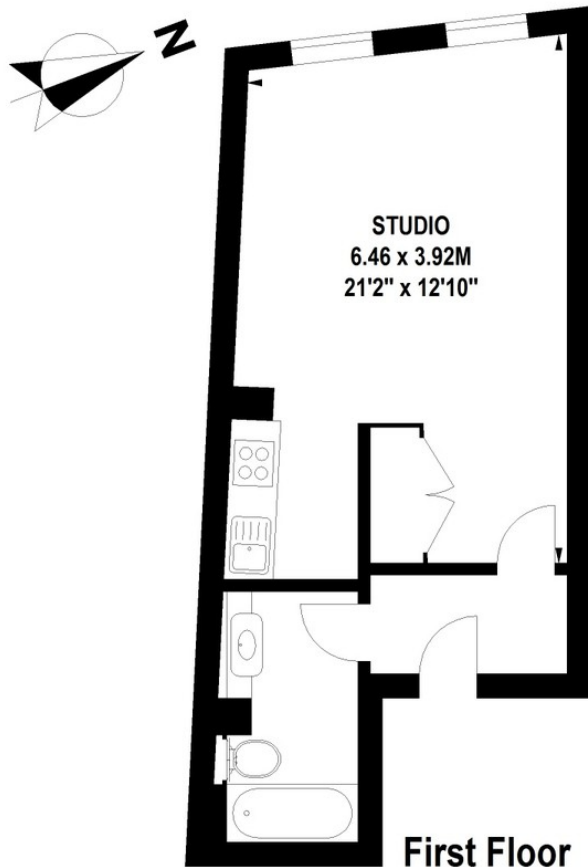


WHAT YOU NEED TO KNOW:

- 1st floor
- Lift
- Wood floors
- Secondary glazing
- No dishwasher but there is washer dryer.

Goodwins House, WC2

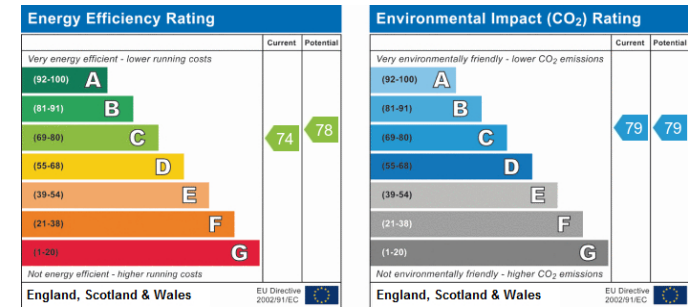
Approximate Gross Internal Area 34.5 sq m / 372 sq ft



Floor Plan produced for Tavistock Bow by Mays Floorplans © . Tel 020 3397 4594

Illustration for identification purposes only, not to scale

All measurements are maximum, and include wardrobes and window bays where applicable



About Us

Tavistock Bow is an independent residential agency based in Covent Garden. We are niche, boutique, creative, knowledgeable, professional and approachable. We love what we do and that's why we do it.

Contact Us

- a.** 31 Long Acre, London, WC2E 9LA
- t.** 020 7477 2177
- e.** hello@tavistockbow.com
- w.** tavistockbow.com

