







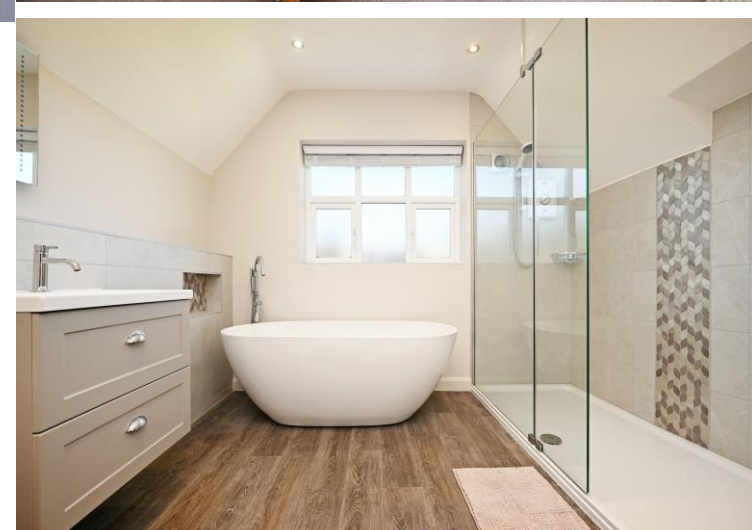
## 560 Fulwood Road

Fulwood • Sheffield • S10 3QE

Offers in the region of £895,000

A substantial and beautifully extended detached period family home, originally built in 1912, occupying a prime position on one of Fulwood's most sought-after residential roads. This impressive property combines elegant original features with high-quality modern finishes, offering generous and highly versatile accommodation arranged over three floors. The home is entered via a striking oversized stained-glass front door into an elegant, tiled hallway, setting the tone for the rest of the property. To the front, there are two spacious bay-fronted reception rooms filled with natural light. The main lounge is stylishly presented with a contemporary feel, featuring a focal fireplace and attractive chimney breast, while the second reception room offers flexible use as a formal dining room, playroom, or additional family space. To the rear, a superb extension creates a stunning open-plan kitchen, dining and living area, designed for modern family life and entertaining. The bespoke "My Fathers Heart" kitchen is finished to an exceptional standard, featuring granite worktops, ceramic tiled flooring with underfloor heating, and a comprehensive range of integrated appliances. The adjoining living/dining space is bright and airy, with wraparound windows overlooking the garden, along with underfloor heating, a ground floor WC, a utility room, and useful storage housing the boiler. The first floor provides three well-proportioned double bedrooms, all with fitted wardrobes. Two of the front bedrooms benefit from en-suite shower rooms, complemented by a further separate WC. The second floor hosts a charming fourth double bedroom with character features including a stained-glass window and eaves storage, alongside a beautifully finished contemporary family bathroom with freestanding bath and walk-in double shower. Externally, the property continues to impress. A generous driveway provides ample off-road parking and access to an integral garage, alongside a well-maintained front garden. To the rear, a private and enclosed garden offers a spacious patio ideal for outdoor dining and entertaining, leading onto a level lawn bordered by mature trees, shrubs, and hedging. Located in a highly desirable residential area of Fulwood, Sheffield, the property is within easy reach of excellent local amenities, reputable schools, and nearby green spaces including parks and woodland walks, making it an ideal family home in a sought-after setting.





- Extended Detached Period Home
- 4 Double Bedrooms
- Contemporary Bathroom & 2 Ensuites
- My Fathers Heart Bespoke Kitchen
- 2 Versatile Reception Rooms
- Stunning Open Plan Dining Kitchen
- Landscaped Rear Garden
- Driveway & Integral Garage
- Freehold
- Council Tax Band G, EPC Rating C



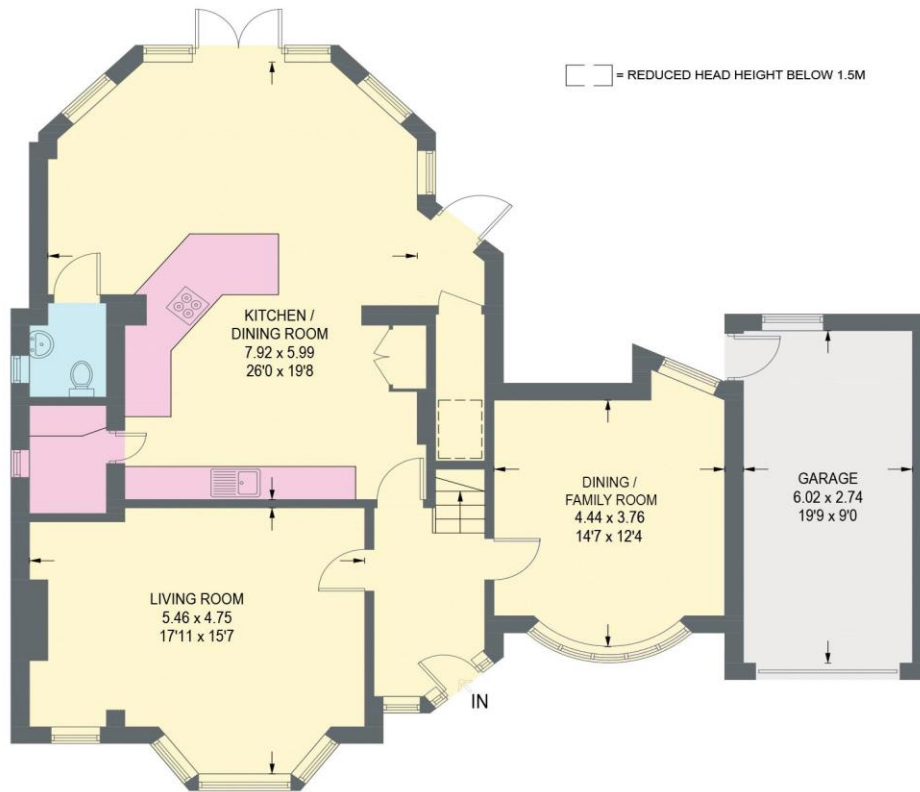
# 560 FULWOOD ROAD

APPROXIMATE GROSS INTERNAL AREA = 198.0 SQ M / 2132 SQ FT

GARAGE = 16.6 SQ M / 179 SQ FT

TOTAL = 214.6 SQ M / 2311 SQ FT

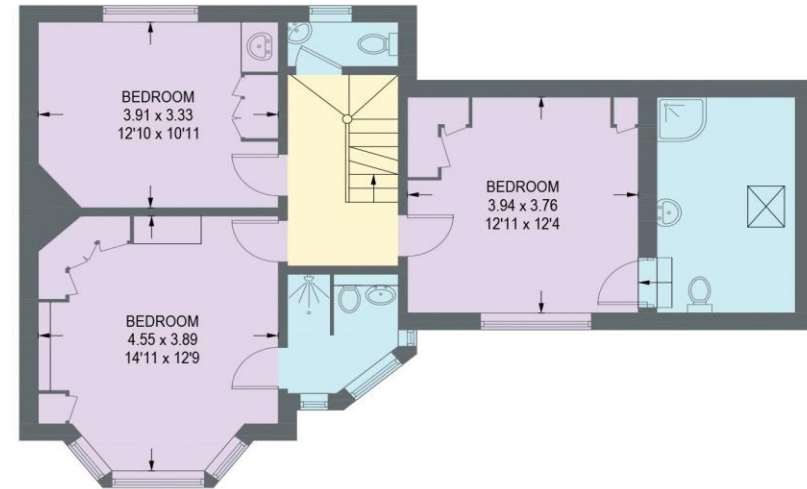
(EXCLUDING EAVES)



**GROUND FLOOR**  
99.0 SQ M / 1066 SQ FT



**SECOND FLOOR**  
31.1 SQ M / 335 SQ FT



**FIRST FLOOR**  
67.9 SQ M / 731 SQ FT

Illustration for identification purposes only,  
measurements are approximate, not to scale.



haus

West Bar House, 137 West Bar, Sheffield, S3 8PU  
[hello@haushomes.co.uk](mailto:hello@haushomes.co.uk) [haushomes.co.uk](http://haushomes.co.uk)

0114 276 8868