

clever



Flat 1 17 Woodland Terrace,

, Plymouth, PL4 8NL

£261 Per week

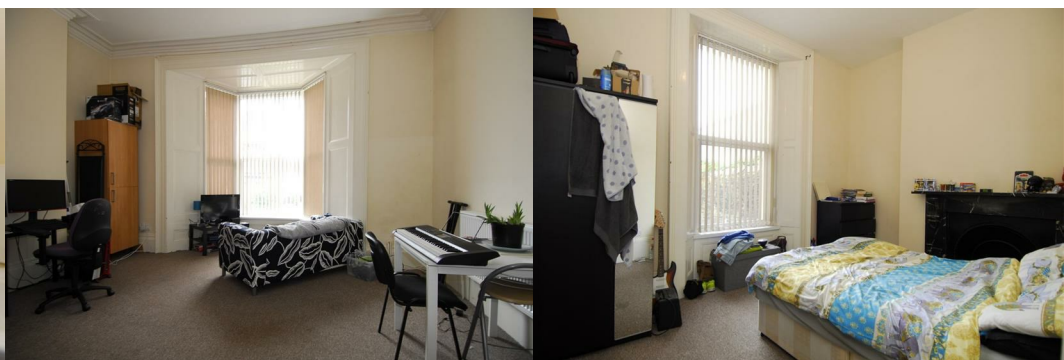


Nestled in the heart of Greenbank Road, this charming one-bedroom apartment is a delightful find. Situated on the ground floor, this property is ideal for a couple or a single student seeking a cosy abode.

Boasting a convenient location, this apartment is just a stone's throw away from the University of Plymouth, making it a perfect choice for students looking for a comfortable and accessible living space. Additionally, being in close proximity to local amenities means that everything you need is within easy reach.

The property features a well-maintained bathroom and a cosy bedroom, providing a comfortable living space for its residents. The first-come, first-served parking adds to the convenience of this apartment, ensuring that parking is hassle-free for those with vehicles.

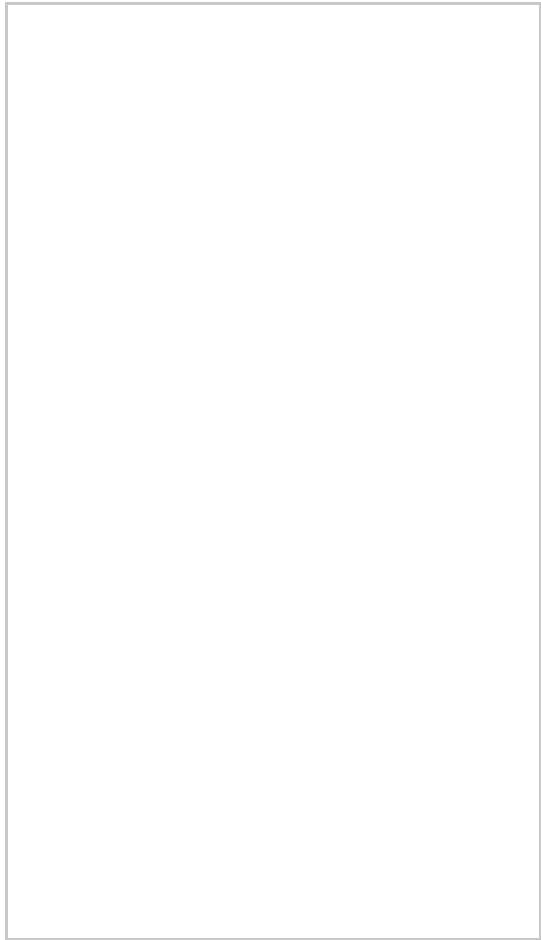
Furthermore, having an Aldi supermarket right next door is a fantastic perk, making grocery shopping a breeze for the lucky inhabitants of this apartment.



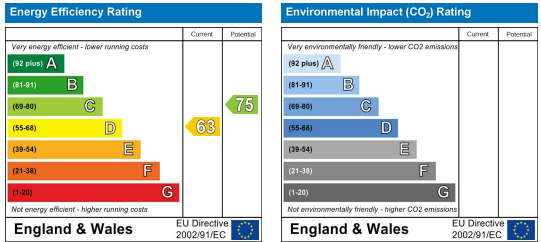
Area Map



Floor Plans



Energy Efficiency Graph



These particulars, whilst believed to be accurate are set out as a general outline only for guidance and do not constitute any part of an offer or contract. Intending purchasers should not rely on them as statements of representation of fact, but must satisfy themselves by inspection or otherwise as to their accuracy. No person in this firm's employment has the authority to make or give any representation or warranty in respect of the property.