

Cassland Road, E9

£5,250 Per week

A recently refurbished four double bedroom terraced house on Cassland Road. This beautifully presented property comes with Four large double bedrooms, separate study, a spacious separate kitchen leading onto a private garden.

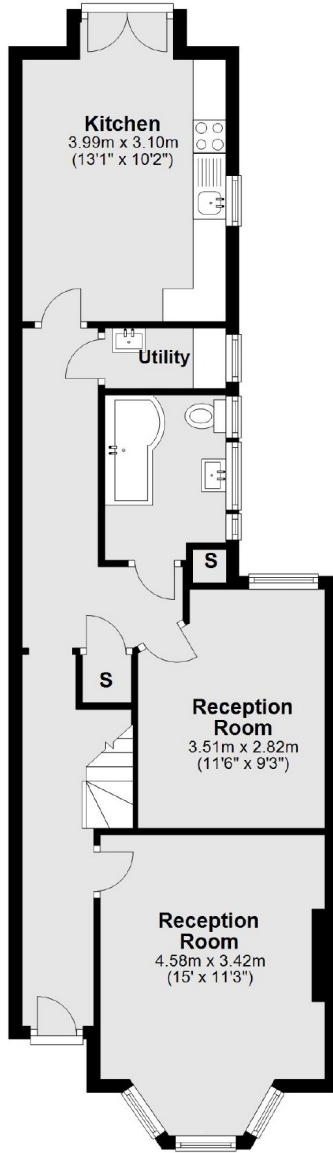
Cassland Road connects directly to Well Street common, nearby Mare Street amenities. Various transport links going directly into the City and Victoria Park are all within walking distance.

Features

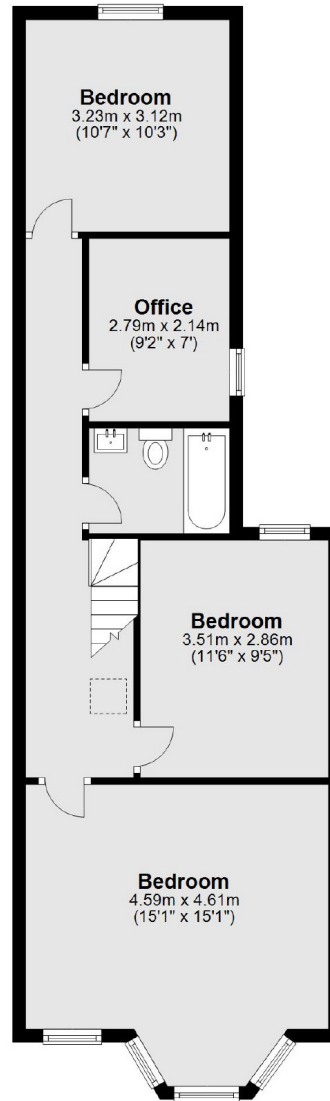
Four Double Bedroom
Terraced House
Private Garden
Separate Study
Bay Windows
Furnished

Cassland Road, London, E9

Ground Floor



First Floor



Total area: approx. 121.0 sq. metres (1302.6 sq. feet)