



Concord Avenue | | Chatham | ME5 9UA

Guide price £400,000



Concord Avenue |  
Chatham | ME5 9UA  
Guide price £400,000

Guide Price £400,000 – £425,000

A beautifully renovated four-bedroom family home for sale on Concord Avenue in the popular Davis Estate area of Chatham, offering spacious and flexible accommodation, modern open-plan living and close proximity to well-regarded schools — ideal for families seeking a long-term home in a highly convenient location.

Finished to a high standard throughout, this impressive home has been thoughtfully updated to suit modern family living, combining practicality, comfort and style.

The ground floor centres around a bright and spacious open-plan kitchen and dining area, creating the heart of the home and a perfect space for family life, entertaining and everyday living. A separate living room with log burner provides a cosy retreat, while a versatile ground floor bedroom or additional reception room offers flexibility for growing families, guests or home working. A modern shower room completes the ground floor.

Upstairs, three further well-proportioned bedrooms are complemented by a modern family bathroom, providing comfortable accommodation for family life. The additional loft room offers further versatility, ideal as a playroom, office or additional bedroom space.

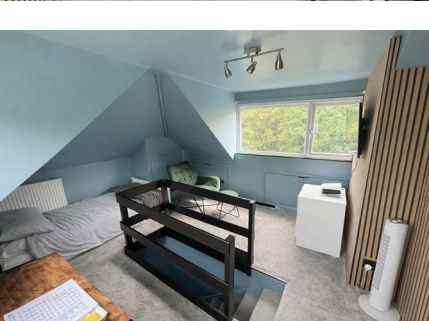
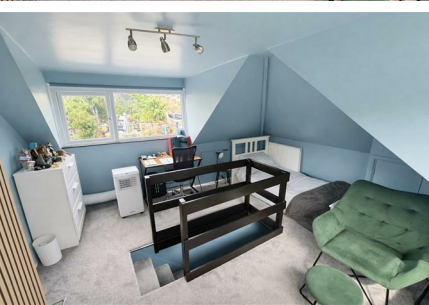
Externally, the property benefits from a private driveway and a well-maintained tiered rear garden, offering space for outdoor dining, play and relaxation. To the front, a large green provides an ideal setting for families and children.

The location is a key feature, with a range of well-regarded primary and secondary schools nearby, as well as convenient access to local amenities, transport links and commuter routes.

A superb opportunity to secure a spacious, move-in-ready family home in a sought-after and family-friendly location.

Early viewing is highly recommended – contact Machin Lane to arrange your viewing.





### Ground Floor

618 sq ft (57 sq m)

This welcoming entrance hall leads into a comfortably sized living room featuring a large window that fills the space with natural light. Adjacent is the generous kitchen and dining area, which provides ample space for cooking and entertaining. The kitchen includes an island and offers access to a small additional room, Bedroom 3, which is ideal for a guest room or home office. A compact bathroom is conveniently located nearby.

### First Floor

429 sq ft (40 sq m)

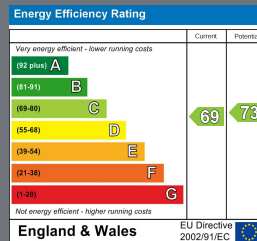
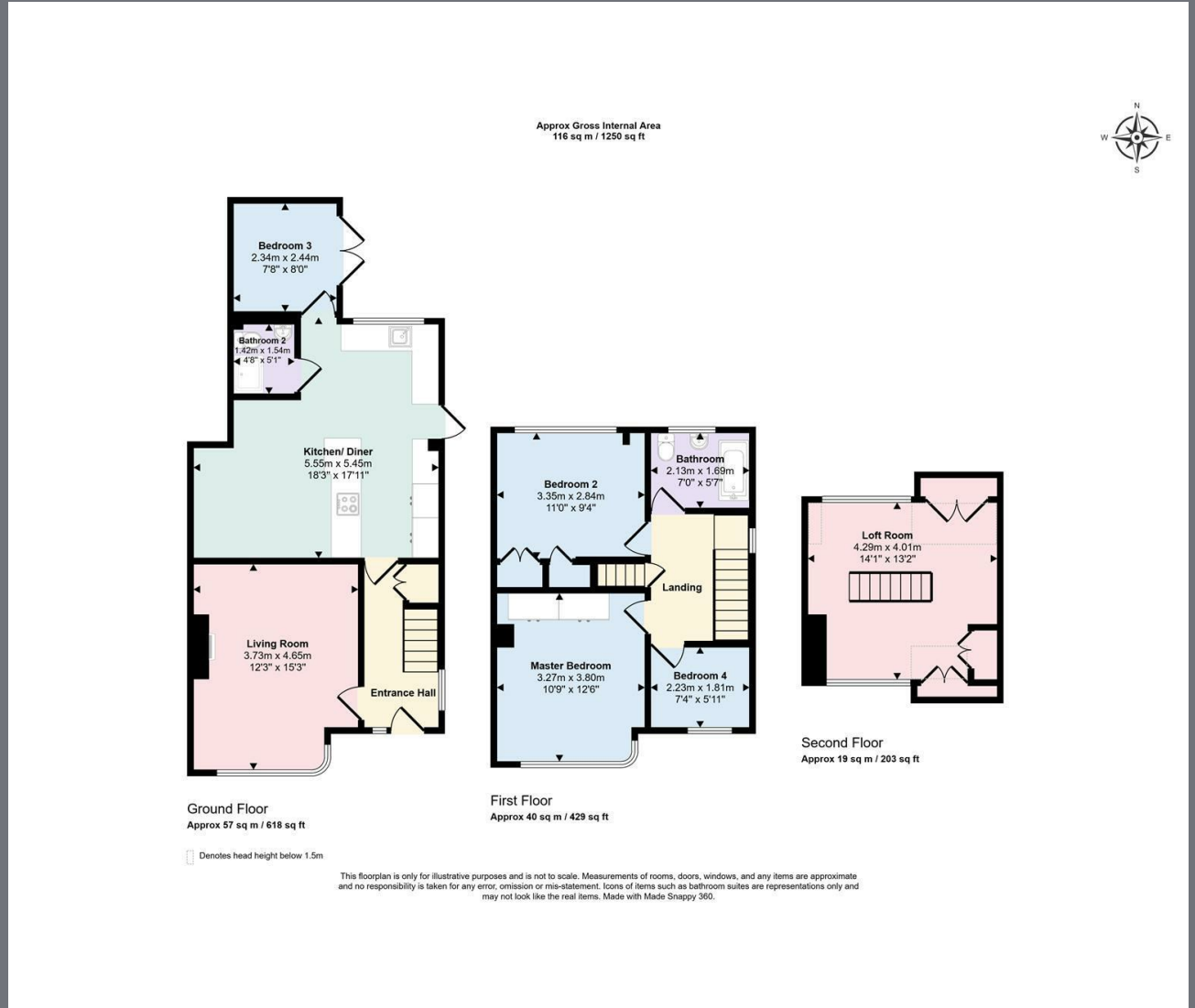
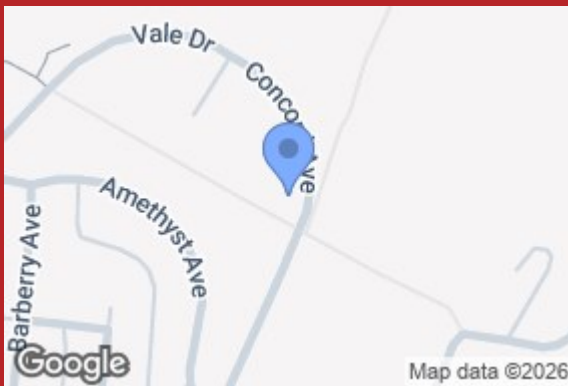
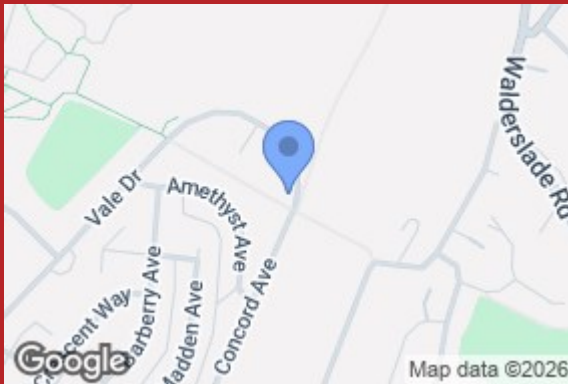
The first floor features a master bedroom with a bay window, offering a bright and spacious retreat. Bedroom 2 is a good-sized double room, while Bedroom 4 is smaller and could serve as a child's room or study. A well-proportioned family bathroom with a bath completes this floor. The landing connects all rooms and staircase access to the floors above and below.

### Loft Room

203 sq ft (19 sq m)

The loft room spans the entire second floor, providing a versatile space that could be used as a playroom, office, or additional bedroom. It includes built-in storage cupboards and benefits from two windows, creating a light and airy atmosphere.





2B Crow Lane  
Rochester  
Kent  
ME1 1RF

01634 829080

admin@machin-lane.co.uk

https://www.machin-lane.co.uk/