



**29 Sherford Road, Swindon**  
Swindon

**£450,000**



## 29 Sherford Road

Swindon

Modern 4-bed detached house in Haydon Wick with spacious living areas, modern kitchen, built-in wardrobes, garage, driveway, and low-maintenance garden. Ideal for families/professionals. Book a viewing to experience stylish, comfortable living.

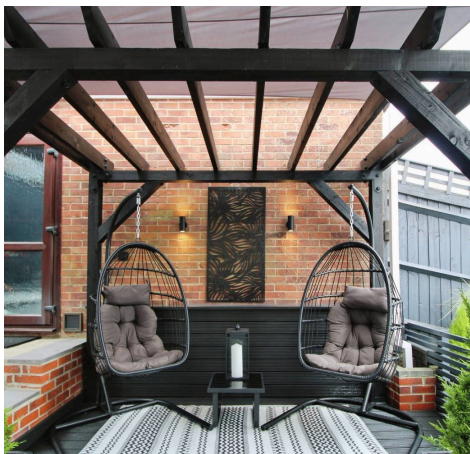
Council Tax band: E

Tenure: Freehold

EPC Energy Efficiency Rating: C

EPC Environmental Impact Rating: C

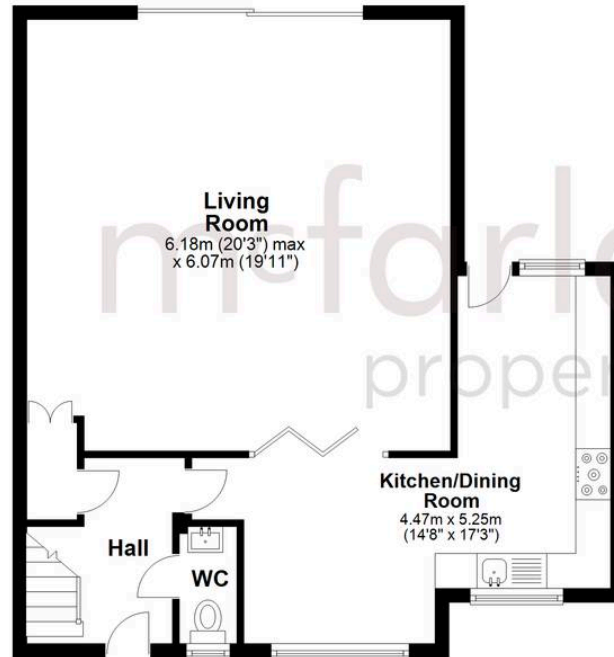
- DETACHED FOUR BEDROOM HOME
- EXTENSIVE LIVING DINING AREA
- MODERN FITTED KITCHEN WITH BREAKFAST AREA
- BUILT IN WARDROBES TO BEDROOM ONE AND TWO
- EN-SUITE TO MASTER
- FOUR PIECE FAMILY BATHROOM
- GARAGE AND DRIVEWAY PARKING
- LOW MAINTENANCE REAR GARDEN
- CORNER PLOT
- DESIRABLE HAYDON WICK LOCATION



**Garage**  
Approx. 12.9 sq. metres (138.8 sq. feet)



**Ground Floor**  
Approx. 64.3 sq. metres (692.2 sq. feet)



**First Floor**  
Approx. 63.3 sq. metres (680.8 sq. feet)



Total area: approx. 140.4 sq. metres (1511.8 sq. feet)

## McFarlane Sales & Lettings

North Swindon, Redhouse Village Centre, Swindon - SN25 2FW

01793 296600 • [swindon@mcfarlaneproperty.com](mailto:swindon@mcfarlaneproperty.com) • [www.mcfarlaneproperty.com/](http://www.mcfarlaneproperty.com/)