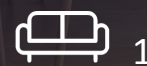
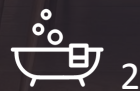




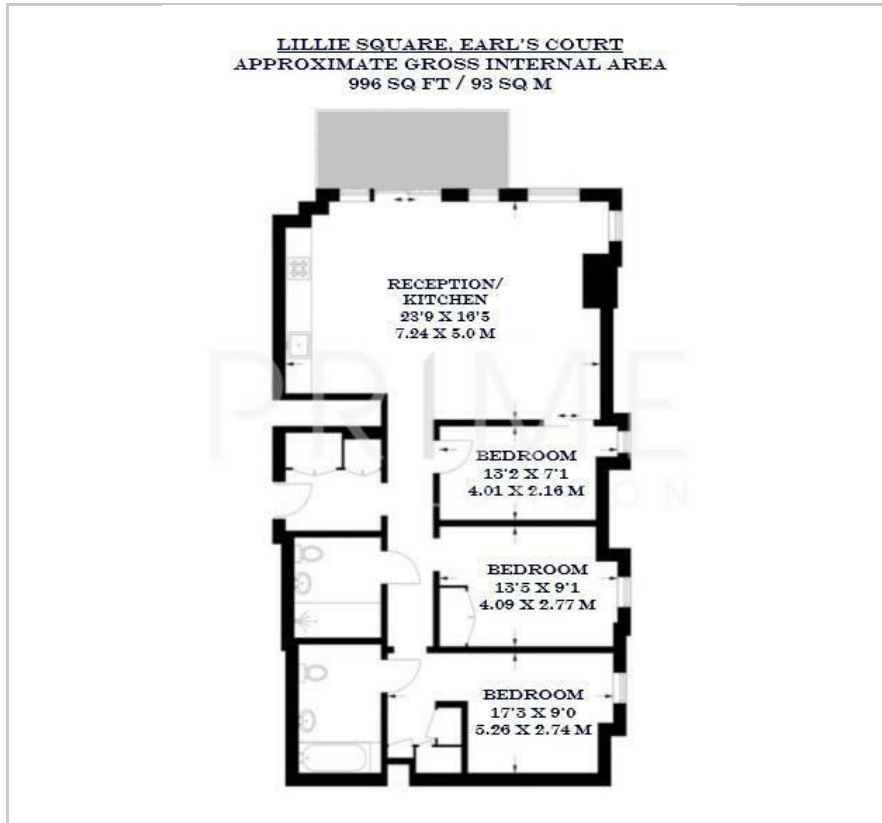
1 Lillie Square

West Brompton, SW6 1DZ

Asking Price £1,350,000



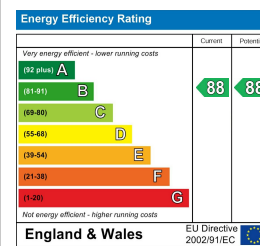
Floor Plan



Area Map



Energy Efficiency Graph



Viewing

By appointment. Contact us on 0207 052 1075 if you wish to arrange a viewing appointment for this property, or require further information.

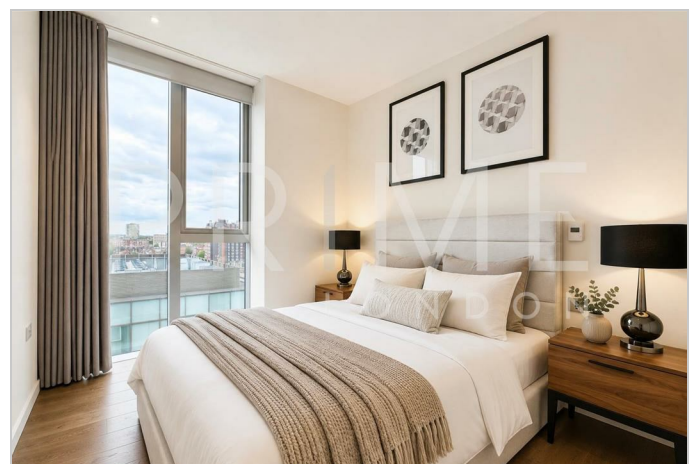
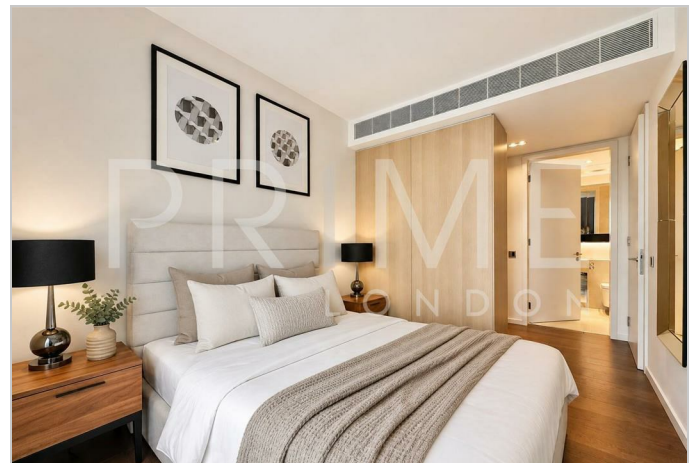
- Exceptional three bedroom ▪ 996 sq ft (93 sqm) apartment
- Dedicated underground ▪ Residents only gym, parking space swimming pool and spa
- Open plan reception/kitchen ▪ 24 hour concierge area

This exceptional three bedroom apartment, located in the prestigious Lillie Square development and also benefitting from a dedicated underground parking space, is available for chain free sale through Prime London.

Totalling 996 sq ft (93 sqm), the property boasts a spacious open plan reception and kitchen area, with floor to ceiling windows that allow for excellent natural light throughout. All three bedrooms are spacious and modern. The apartment features ample storage space areas and a private balcony with views of the city skyline.

The apartment is located in the highly sought after Lillie Square development that offers residents a gym, swimming pool, spa and 24 hour concierge.

For transport, West Brompton Station is just a stone's throw away and provides excellent transport links across the city.



These particulars, whilst believed to be accurate are set out as a general outline only for guidance and do not constitute any part of an offer or contract. Intending purchasers should not rely on them as statements of representation of fact, but must satisfy themselves by inspection or otherwise as to their accuracy. No person in this firm's employment has the authority to make or give any representation or warranty in respect of the property.