

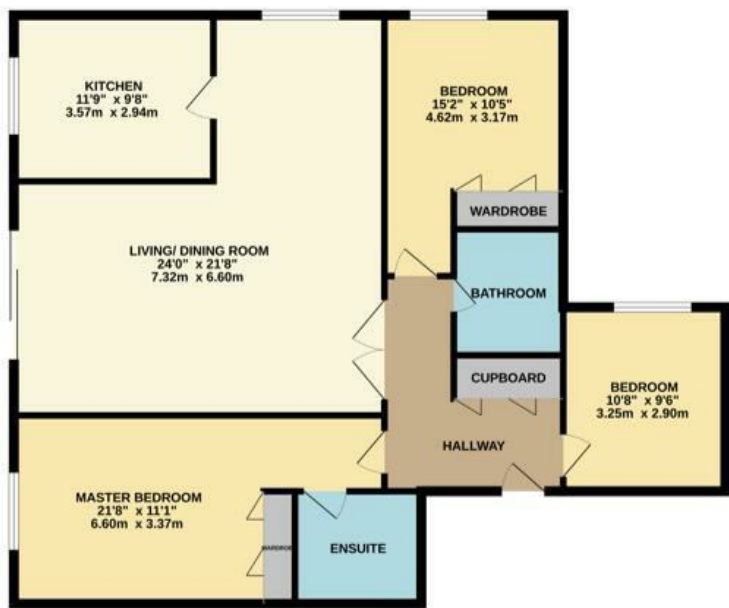


jordan fishwick

10 SANDRINGHAM COURT CAVENDISH MEWS WILMSLOW
Guide Price £479,950

10 SANDRINGHAM COURT CAVENDISH MEWS WILMSLOW SK9 1PW

**** NO ONWARD CHAIN **** A spacious and well presented three bedroom first floor apartment, ideally located for Wilmslow town centre, Sainsbury's and Wilmslow train station. In brief, the accommodation comprises: Entrance hall with storage, large spacious living dining room with sliding doors, a well proportioned fitted kitchen, double bedroom with en-suite, further double bedroom, well proportioned third bedroom and a family bathroom. The property also benefits from a lift to all floors and its own garage. Wilmslow town centre offers a wide range of amenities, which include a number of local shopping facilities, bars and restaurants. Wilmslow train station offers a direct service to London Euston and Manchester City centre and the location caters for many different needs. The property is well placed for easy access to the M56 and A34 for commuters to Manchester and the North West commercial centres and Manchester Airport is less than 20 minutes away. Viewings essential to fully appreciate.



- First Floor Apartment
- Three Bedrooms
- Lift Access
- Easy access to Wilmslow train station
- Garage
- Stone's throw to Wilmslow town centre
- No Onward Chain

Energy Efficiency Rating		Environmental Impact (CO ₂) Rating			
Very energy efficient - lower running costs	Current	Potential	Very environmentally friendly - lower CO ₂ emissions	Current	Potential
(92 plus) A			(92 plus) A		
(81-91) B			(81-91) B		
(69-80) C			(69-80) C		
(55-68) D			(55-68) D		
(39-54) E			(39-54) E		
(21-38) F			(21-38) F		
(1-20) G			(1-20) G		
Not energy efficient - higher running costs			Not environmentally friendly - higher CO ₂ emissions		
England & Wales			England & Wales		
	EU Directive 2002/91/EC			EU Directive 2002/91/EC	

Energy Efficiency: Current 77, Potential 80
 Environmental Impact: Current 1, Potential 1