

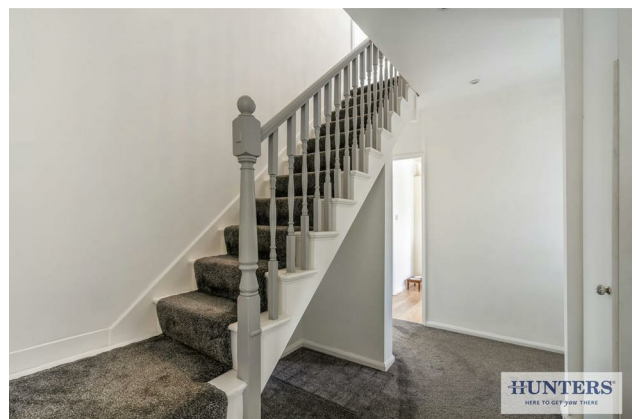
HUNTERS®

HERE TO GET *you* THERE

12 Church Street, Yeadon, Leeds, LS19 7SB

Offers In Excess Of £350,000

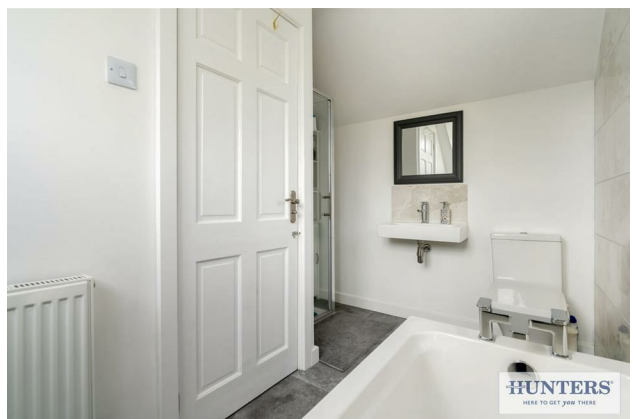
Property Images



HUNTERS[®]

HERE TO GET *you* THERE

Property Images



HUNTERS[®]

HERE TO GET *you* THERE

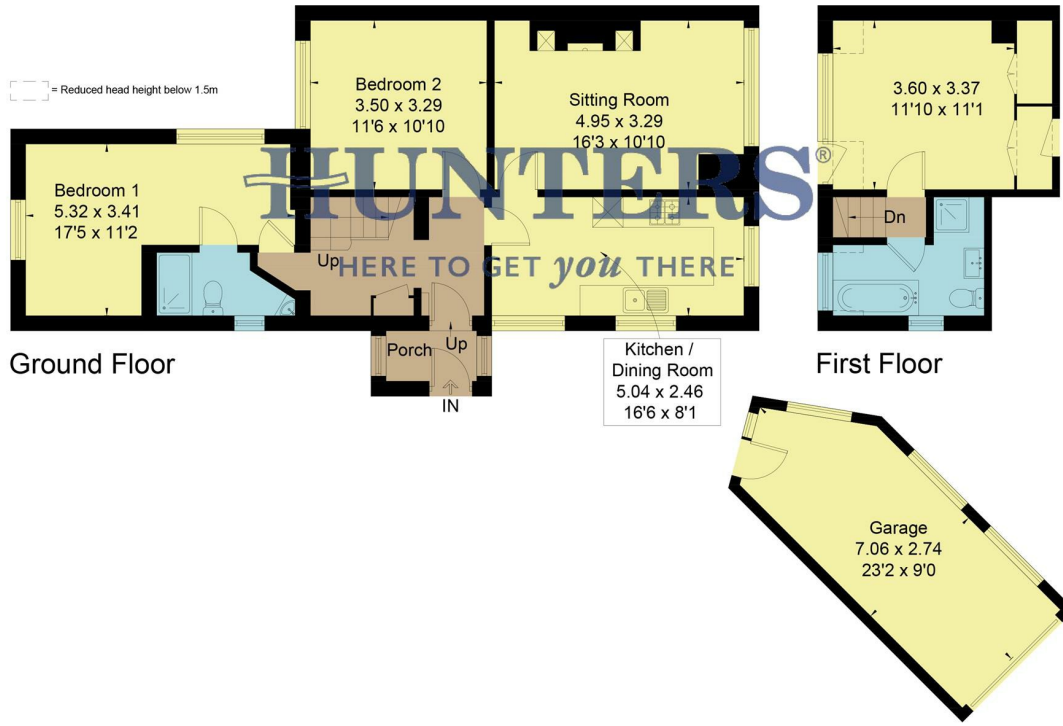
Property Images



HUNTERS®

HERE TO GET *you* THERE

Approximate Floor Area = 94.1 sq m / 1013 sq ft
 Garage = 17.5 sq m / 188 sq ft
 Total = 111.6 sq m / 1201 sq ft

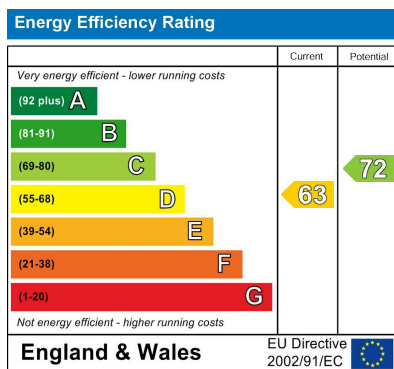


(Not Shown In Actual Location / Orientation)



This floor plan has been drawn in accordance with RICS Property Measurement 2nd edition.
 All measurements, including the floor area, are approximate and for illustrative purposes only. @fourwalls-group.com #107627

EPC



Map



Details

Type: Bungalow - Semi Detached Beds: 3 Bathrooms: 2 Receptions: 1 Tenure: Freehold

Summary

Nestled on the charming Church Street in Yeadon, Leeds, this exquisite semi-detached extended dormer bungalow offers a perfect blend of modern living and traditional charm. With three spacious double bedrooms, this property is ideal for families or those seeking extra space.

The interior boasts an inviting reception room, providing ample space for relaxation and entertaining. Each of the three bedrooms is designed to a high specification, ensuring comfort and convenience for all residents and guests.

One of the standout features of this home is its picturesque view overlooking the local church, adding a touch of serenity to your daily life. The beautifully landscaped gardens offer a delightful outdoor space, perfect for enjoying sunny afternoons or hosting gatherings with friends and family.

Additionally, the property includes a detached garage and a driveway, providing secure parking and extra storage options. This home is not just a place to live; it is a sanctuary that combines elegance with practicality.

With its prime location and impressive features, this property is a rare find in Yeadon. Do not miss the opportunity to make this stunning bungalow your new home.

Features

- Extended dormer bungalow
- Three spacious double bedrooms
- High specification throughout
- Overlooks charming church
- Beautiful landscaped gardens
- Detached garage and driveway
- Two cosy reception rooms
- Two modern bathrooms
- Semi-detached house style
- Prime location in Yeadon