

## Cromwell Road, SW7

£950 Per week

A bright two bedroom duplex apartment on the sixth floor of a popular secure development in South Kensington. The property has a large spacious living room and has two equal size double bedrooms.

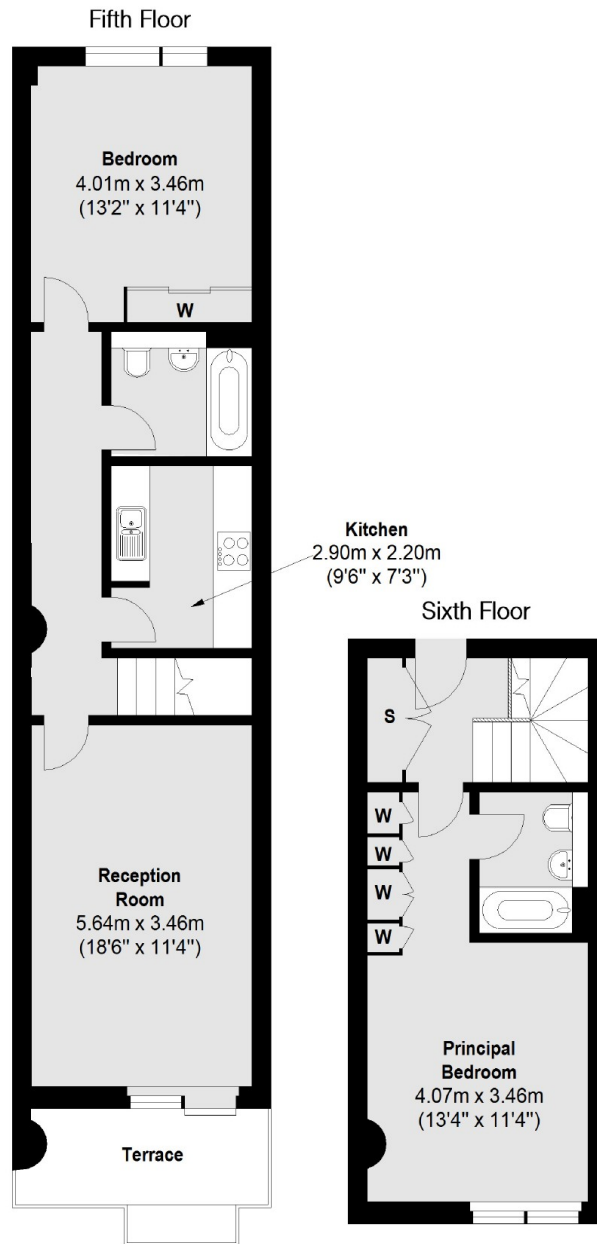
24hr porter, lift, close to Sainsburys, Waitrose and also moments away from a variety of shops and bars including Gloucester Road underground station which services the district and circle and Piccadilly lines.

### Features

- Two Bedroom
- Two Bathroom
- 24 Hour Concierge
- Private Balcony
- Split Level Flat
- West Facing

# Cromwell Road, London, SW7

## Point west, SW7



Internal Area (approx.): 84.3 sq. m (907.4 sq. ft)  
Balcony Area (approx.): 6.7 sq. m (72.1 sq. ft)

Not to scale, for guidance only and must not be relied upon as a statement of fact.  
All measurements and areas are approximate only