

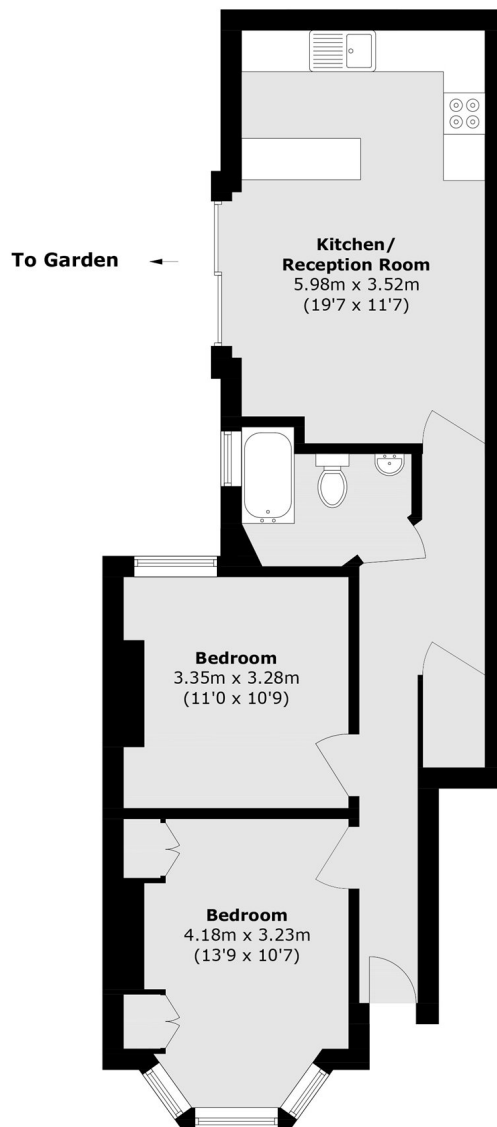


Valetta Road, W3

£575,000

A two double bedroom garden flat on the borders of both Chiswick and Shepherds Bush. This period property is in excellent condition throughout, which benefits from a share of freehold and a private south facing garden with back gate access.

Valetta Road is within half a mile of Acton Central station (Overground), Acton Park and the shops and amenities of Churchfield Road.



Total area (approx.): 60.7 sq. m (653.3 sq. ft)

Robertson Smith & Kempson Acton Sales
137 High Street, Acton,
London, W3 6LY
020 8896 3996
actonsales@robertsonsmithandkempson.co.uk

Energy Rating: . We aim to make our particulars both accurate and reliable. However they are not guaranteed; nor do they form part of an offer or contract. If you require clarification on any points then please contact us, especially if you're traveling some distance to view. Please note that appliances and heating systems have not been tested and therefore no warranties can be given as to their good working order.