



WESTWOODLEBER

WESTWOODLEBER
LET US GUIDE YOU HOME

Plomer Avenue, Hoddesdon, EN11 9FQ
£325,000



Plomer Avenue, Hoddesdon, EN11 9FQ

Westwood Leber are delighted to bring to the market this beautifully presented top floor three-bedroom apartment, ideally located in a sought-after position within Hoddesdon.

This spacious home offers versatile and well-arranged accommodation across two floors. The ground level boasts a welcoming entrance hall, a bright living room, and a modern fitted kitchen, complemented by a generous dining room and a convenient ground-floor bedroom. There is also a stylish family bathroom and an ensuite to main bedroom, enhancing practicality.

Upstairs, the property benefits from three further well-proportioned bedrooms, each with useful eaves storage, along with an additional shower room, creating a superb layout for families or professionals alike.

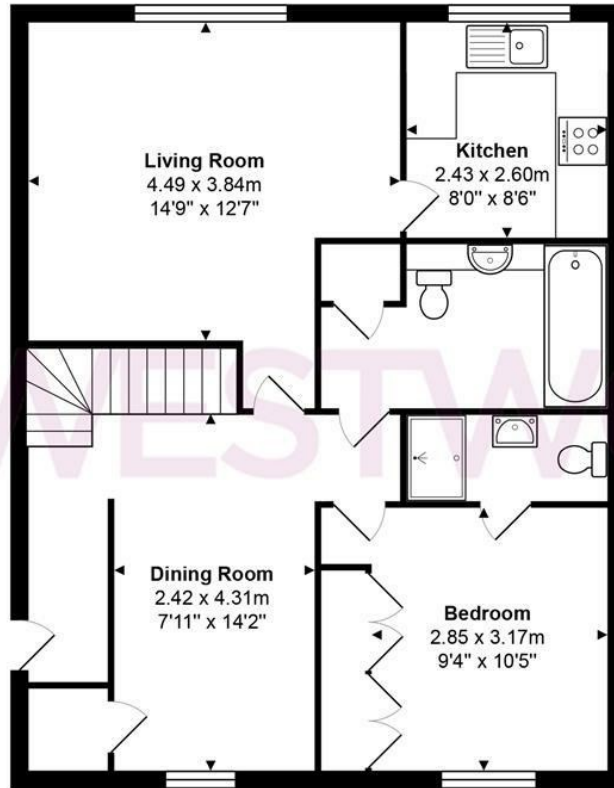
Externally, residents enjoy well-maintained communal grounds and ample on-street parking in this popular residential setting.

Perfectly positioned close to Hoddesdon town centre, excellent local schooling, and superb transport links, this property offers an ideal blend of comfort and convenience. An internal viewing is highly recommended!

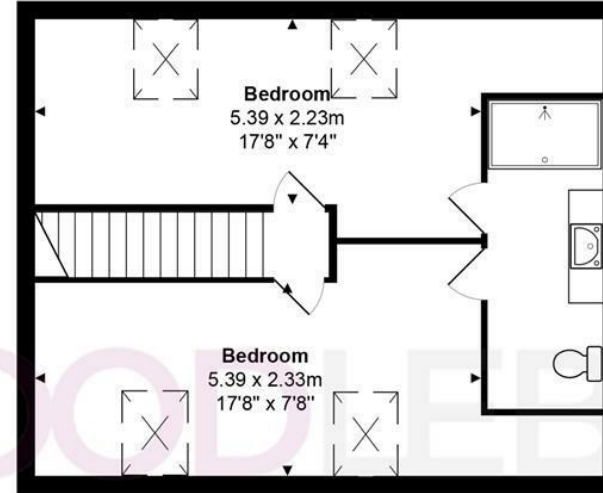


 WESTWOODLEBER

 WESTWOODLEBER
LET US GUIDE YOU HOME



Ground Floor



First Floor

Total Area: approx. 101.0 m² ... 1087 ft²

THE FLOORPLAN IS FOR ILLUSTRATIVE PURPOSES ONLY AND IS NOT TO SCALE.
Measurements and features are approximate and may differ from the actual property. Verify all details independently; no liability is accepted for errors or omissions.

Property marketing provided by www.fotomarketing.co.uk











