

*Symonds
Taylor*

8f Osborne Villas, Jesmond

Newcastle Upon Tyne

Offers Over **£260,000**



8f Osborne Villas

Jesmond, Newcastle Upon Tyne

This second floor apartment is within this impressive detached villa on a highly sought after part of Jesmond with 2 double bedrooms and south facing views over the mature communal gardens.

Accommodation comprises:

Ground floor: Communal hallway, stairs & lift to each floor.

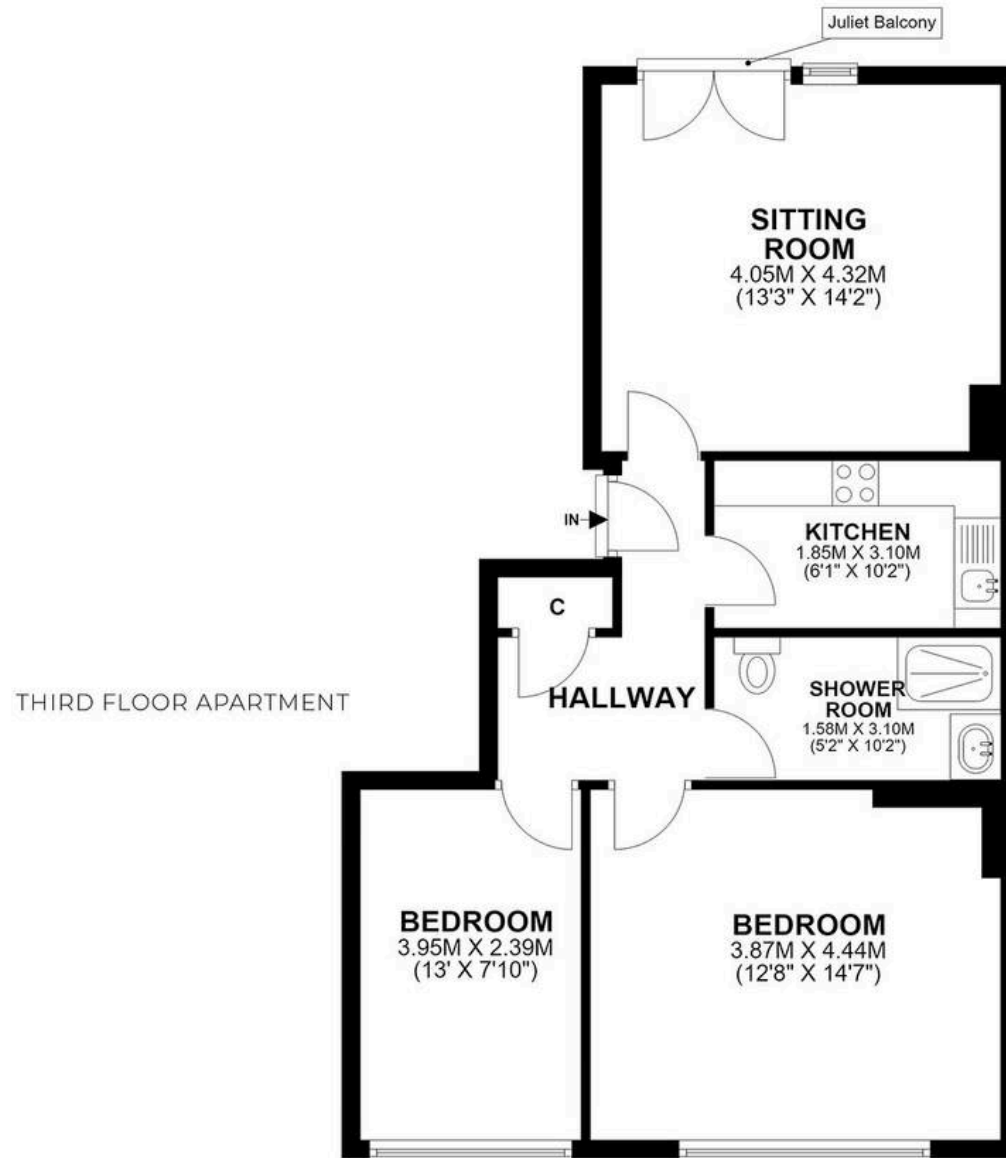
Second floor: Communal landing, hallway, sitting room, kitchen, principal bedroom, ensuite shower room, bedroom 2, shower room/wc.

Outside: Allocated & visitor parking, rear south facing communal lawn garden, communal basement storage.

Council Tax band: B

Tenure: Leasehold





8F OSBORNE VILLAS, JESMOND, NE2 1JU

APPROXIMATE GROSS INTERNAL AREA 62 SQ M 668 SQ FT NOT TO SCALE - FOR ILLUSTRATIVE PURPOSES



Symonds Taylor

101 St. Georges Terrace, Jesmond - NE2 2DN

0191 338 9999 • hello@symondstaylor.co.uk • www.symondstaylor.co.uk

All descriptions, plans or references to condition are given in good faith only. Whilst every endeavour is made to ensure accuracy, please check with us on any points of especial importance to you.