

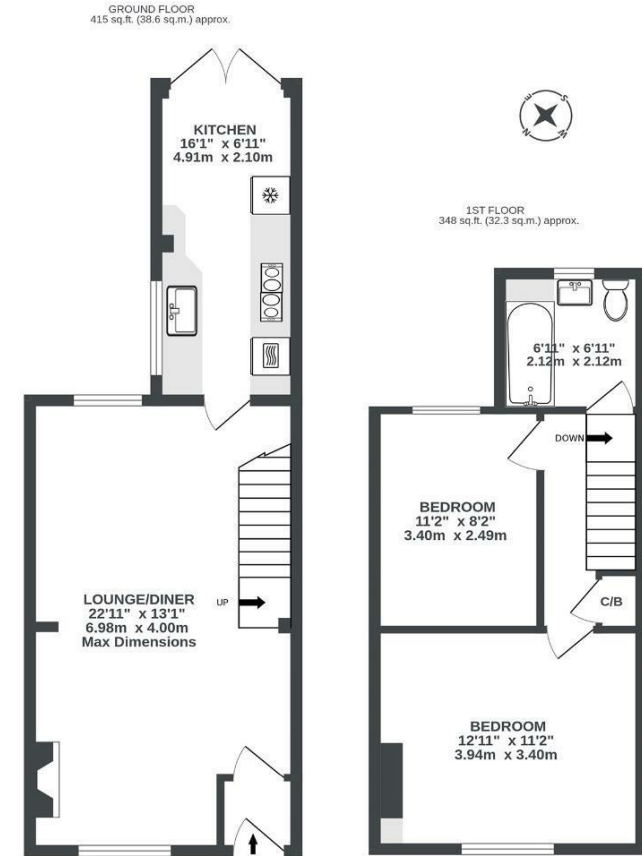
Boardwalk

Stanley Terrace

, BRISTOL

Stanley Terrace BEDMINSTER

APPROXIMATE FLOOR AREA
70.9 SQM / 763 SQFT



Illustrations are for reference purposes only, measurements are approximate, not to scale.



Boardwalk

Stanley Terrace

, BRISTOL



£415,000



2 Bedrooms



BS3 3PJ



1 Bathrooms

"The first thing that struck us about the house is that from the front door you can see all the way to the garden and the view beyond. The garden, south-east facing, gets the most beautiful morning light, and we have enjoyed many a morning cuppa or yoga in the sun on the patio. The street is quiet and peaceful whilst being just 10 minutes walk from all the wonderful independent shops, cafes and restaurants of North Street. We've loved our years here at Stanley Terrace!"

