

west
THE PROPERTY CONSULTANCY



TO LET



12 The Croft, Harwell, Oxfordshire, OX11 0ED

£1,650

- IMMEDIATE AVAILABILITY
- 3 Bedrooms
- Gas fired heating and hot water
- Large garden offering complete privacy
- Short walk to the popular Hart of Harwell pub & eaterie
- A refurbished bungalow in private gardens
- Natural wood integrated kitchen
- Large reception with open fireplace
- Short walk to village shop and butcher
- Oxford c.13.5 miles Didcot Parkway Station c.2.1 Miles

HARWELL
Oxford c.13.5 miles Didcot Parkway Station c.2.1 Miles

Just re-decorated, a bungalow set in private gardens of good size. A good sized main reception room with open fireplace. Fully integrated kitchen. 3 Bedrooms. Bathroom. Ample 'off road' driveway parking. A short walk to the well serviced attractive village centre where there is a combined newsagents and off license and a good butchers shop. Set on the edge of the village The Hart of Harwell pub is popular. Great location for access to Dicot Parkway Station (London Paddington 37-40 minutes direct train) and also to the major A34 trunk road connecting the M4 to the south and M40 to the north. IMMEDIATELY AVAILABLE.
(TOTAL FLOOR AREA: c. 769 sq ft / c.71 m2)

QUOTING RENT: £1,650pcm

THE PROPERTY

SET IN PRIVATE GARDENS OF GOOD SCALE IN WELL SERVICED HARWELL, A REFURBISHED 3 BEDROOM BUNGALOW

12 The Coft, Harwell, Oxfordshire OX11 0ED
Approximate Gross Internal Area 71.41 sq.m / 769 sq.ft

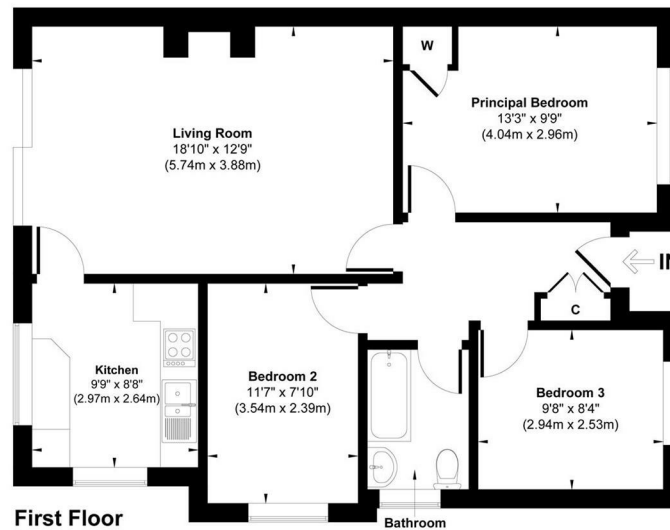


Illustration for identification purpose only, measurements approximate and not to scale.

SITUATION

Contact: Gavin West
(t) 01865 510000 (e) gavin@west-tpc.co.uk

Directions

From the A34 Didcot junction take the Wantage / Steventon turning on the A4130 and proceed up the hill to the Steventon roundabout where you continue straight over on Abingdon Road and take the turning right on to Grove Road signposted Harwell Village. Take the 3rd turning on to the left in to The Croft and wend your way around to No.12a WHAT3WORDS Co-ordinate: [///relatives.weaned.albatross](https://www.what3words.com/relatives.weaned.albatross)