



**Guide Price**

**£85,000**

**Leasehold**

2x  1x  1x 

**Lordsgrove Close,  
Tadworth, Surrey, KT20**

**cubitt & west**  
Helping you move forwards



## Main features

- Shared Ownership
- Ground floor purpose-built development for over 55s
- Modern low-rise building with great sense of community
- Beautiful communal gardens and private patio
- Tailored for independent living and convenient on-site parking
- Walking distance to local transport links and local shops on Tattenham Corner

## Accommodation

### GROUND FLOOR

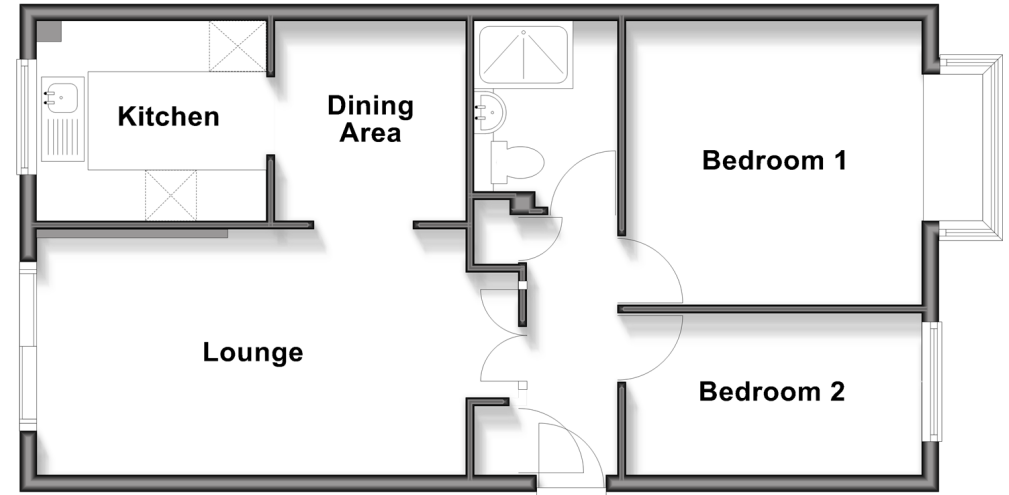
- Entrance Hall
- Lounge: 7'3 x 6'5 (2.21m x 1.96m)
- Kitchen : 8'5 x 7'2 (2.57m x 2.19m)
- Dining Area
- Bedroom 1: 11'1 x 10'1 (3.38m x 3.08m)
- Bedroom 2: 11'1 x 6'5 (3.38m x 1.96m)
- Bathroom

### OUTSIDE

- Private Patio
- Communal Grounds

## Ground Floor

Approx. 58.5 sq. metres (629.4 sq. feet)



Call Banstead - 01737 352233 ■ [cubittandwest.co.uk](http://cubittandwest.co.uk)

■ Legal advice should be taken to verify fixtures/fittings, planning, alterations and/or lease details

■ Appliances & services are untested, dimensions are approximate and floor plans are not to scale



20102693/20251016/NP/OK