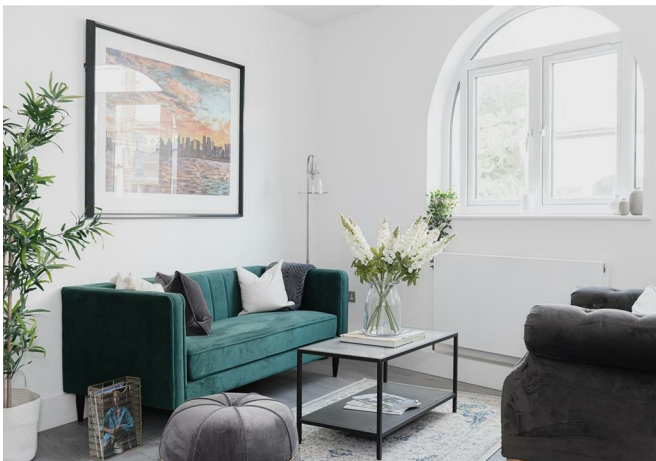




Croydon Road, Reigate

£1,600 Per Month

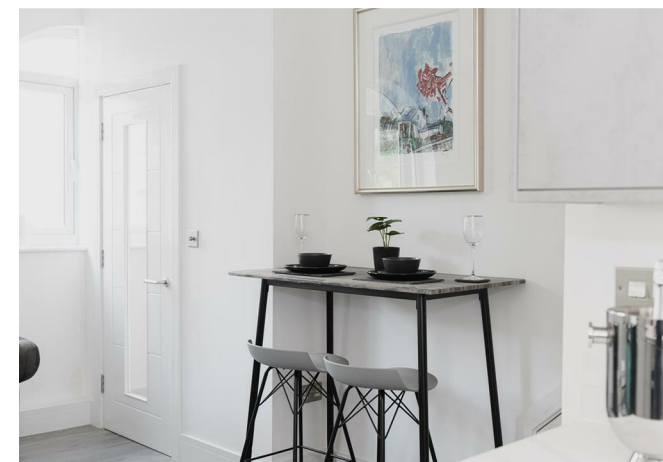




“

Renovated from top to bottom, this modern two bedroom home is located in prime central Reigate. Located within a 10 minute walk to the High Street, train station, parks and local pubs, what more could you wish for!

”



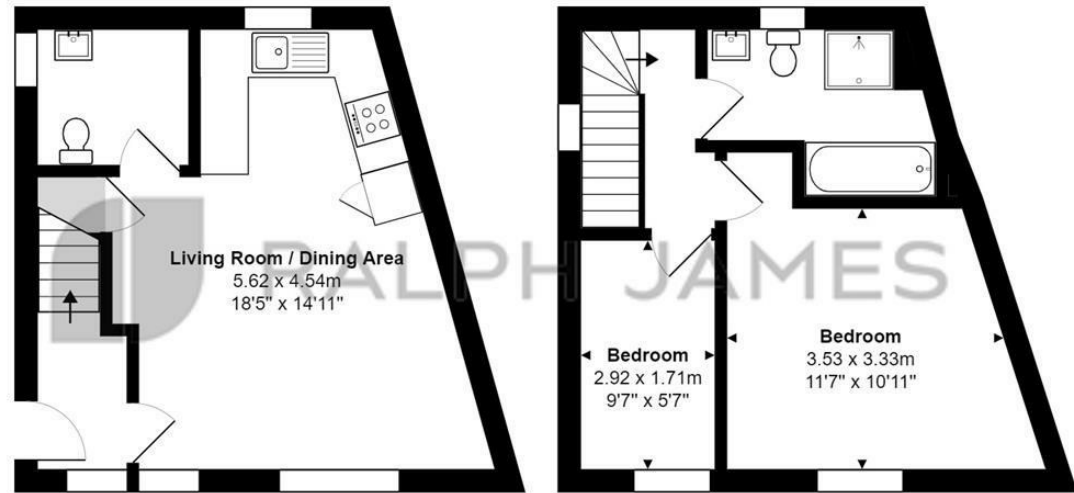
Ralph James is proud to present to the Reigate lettings market, this two-bedroom property is in a prime location, a short walk from the Reigate town centre and train station. It's been completely renovated, with a contemporary finish. Just a brisk walk from town, you have everything you need on your doorstep including a great array of shops, restaurants, an Everyman Cinema, and great walks.

The open plan aspect is a great social space, including a stylish kitchen with integrated, high-spec appliances. There is under-stair storage and a cloakroom allowing perfect options for additional storage.

On the first floor, there is a large master bedroom and a smaller room, great for a home office or nursery. The bathroom is a generous size, still following the modern and sleek design of the rest of the house, with a large tub and separate walk-in shower. To the front, there is an off-road parking space complete with an electric car charge point.

Need to know

- Wonderfully renovated
- High-spec finish
- Off road parking
- Modern open plan living space
- EV charging
- Period conversion
- Parking
- Move in ASAP
- EPC rating: D
- Council Tax Band: C



Ground Floor

First Floor

Croydon Road, Reigate

Total Area: 56.6 m² ... 610 ft²

FOR ILLUSTRATIVE PURPOSES ONLY.



Whilst every attempt has been made to ensure the accuracy of the floor plan shown, all measurements, positioning, fixtures, features, fittings and any other data shown are an approximate interpretation for illustrative purposes only and are not to scale.

No responsibility is taken for any error, omission, miss-statement or use of data shown.

The above statement applies to both 'Still Moving London LTD' and the Company or individual displaying this floor plan.

Unauthorised reproduction prohibited.

© Still Moving London LTD (www.stillmoving.london)



Interested?

reigate@ralphjames.co.uk

01737 333677

1

ralphjames.co.uk