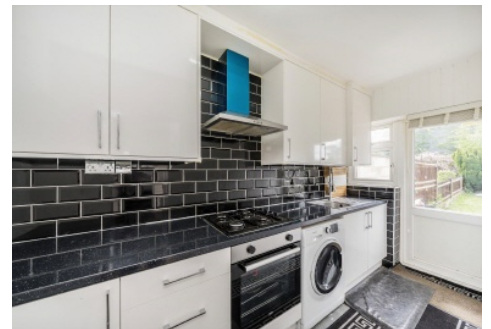


SNELLERS

ESTATE AGENTS



Hampton Road West, TW13

£2,100 PCM

Spacious two bedroom terraced house with a separate galley kitchen and a living room leading onto a large garden, as well as family bathroom and ample storage.

Located on Hampton Road West and just a few hundred yards to Hanworth Park and Sainsburys Hampton, with easy access to the A316 for those looking to drive into and out of London.

- Two Bedroom House • Galley Kitchen • Private Garden •
- Family Bathroom • Large Garden • Close to Transport Links •

SNELLERS

ESTATE AGENTS

Snellers Hampton Hill Lettings
197-201 High Street
Hampton Hill
TW12 1NL
020 8783 3633
hamptonlettings@snellers.co.uk

Energy Rating: E We aim to make our particulars both accurate and reliable. However they are not guaranteed; nor do they form part of an offer or contract. If you require clarification on any points then please contact us, especially if you're traveling some distance to view. Please note that appliances and heating systems have not been tested and therefore no warranties can be given as to their good working order